

# Mac User Manual – 1.8.x Software

For Mac OS X 10.3 (Panther), 10.4 (Tiger), 10.5 (Leopard), and 10.6 (Snow Leopard)



**Software Release Statement**

User Manual for Mac OS X 10.3.x, 10.4.x, 10.5.x and 10.6.x Software Version 1.8.x, released 2010, made in the U.S.A.

**Trademark Statement**

**NetDISK®** , **NDAS®** and **XIMETA™** are trademarks of XIMETA Inc., registered in the U.S.A and other countries. All other trademarks are the property of their respective owners.

**Copyright Statement**

Copyright © 2003 – 2010 XIMETA Inc. All rights reserved. Reproduction, translation, transformation or adaptation in any manner without prior written permission of XIMETA Inc. is strictly prohibited.

**License Statement**

The software described in this document is furnished under a license agreement. The software may be used only in accordance with the terms of the license agreement

**Warranty Statement**

XIMETA Inc. reserves the right to revise this publication and to make changes to the content hereof without the obligation of XIMETA Inc. to notify any person of such revision or changes. XIMETA Inc. provides this publication "as is" without warranty of any kind, either expressed or implied, including but not limited to the implied warranties of merchantability or fitness for a particular purpose.

## Table of Contents

Chapter 1 Introduction .....	4
1.1 User Manual .....	4
1.2 System Requirements .....	4
1.3 NDAS device Connection Overview .....	5
Chapter 2 Cable Installation .....	6
2.1 NDAS Mode .....	6
2.2 USB Mode .....	7
2.3 eSATA Mode .....	7
Chapter 3 NDAS Software Installation .....	8
3.1 Installing NDAS Utility 1.8 Software .....	8
Chapter 4 NDAS Device Registration .....	11
4.1 Register a New NDAS device Automatically. ....	11
4.2 Register a New NDAS device Manually. ....	12
4.3 Register a New NDAS device by registration file.....	13
4.4 Sharing Your NDAS device .....	14
Chapter 5 NDAS Utility .....	15
Chapter 6 NDAS device usage.....	16
6.1 Read Only and Read / Write Mode .....	16
6.2 Changing Read Only or Read / Write Mode .....	17
Chapter 7 Using NDAS devices in a Mixed Environment .....	18
7.1 Mixed Environment with Mac and Windows .....	18
Chapter 8 Preventing Auto Registration of the NDAS device .....	19
8.1 Remove the “ Auto Register ” Capability of your NDAS Device .....	19
8.2 Re-Registering a converted NDAS Device.....	20
Chapter 9 Saving the NDAS Device Registration Information.....	21
Chapter 10 Uninstall .....	22
Chapter 11 FAQ .....	23

# Chapter 1 Introduction

**Congratulations on the purchase of your NDAS device.**

Network storage via Ethernet made possible through **NDAS** technology!

## 1.1 User Manual

This User Manual is intended to help you install your NDAS device quickly and easily onto your Ethernet Network and begin using it immediately on your Personal Computer or the LAN.

## 1.2 System Requirements

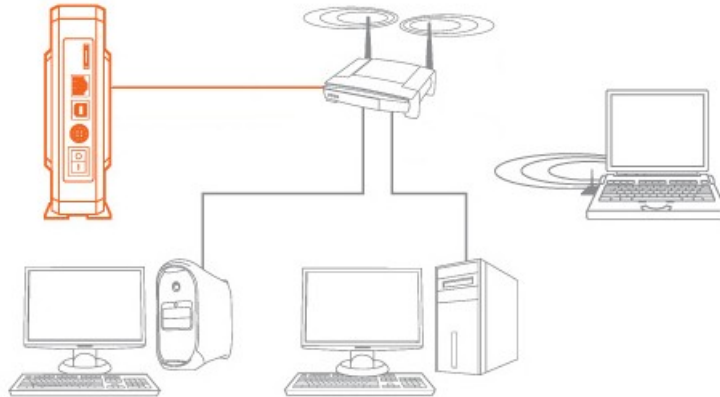
- Mac OS 10.3 (Panther) or later
- G4/G5 Power PC, Intel processor Mac
- 1GB Memory
- USB 2.0 Port
- 100/1000 Base-T full duplex switch for NDAS
- eSATA Port

**Note:** NDAS device cannot be used with any type of Network Hub.

## 1.3 NDAS device Connection Overview

### NDAS Mode

In NDAS Mode, your device is wired directly to the network. Computers that are connected to the network (wired or wireless) can use the NDAS device as if it were a local disk drive.



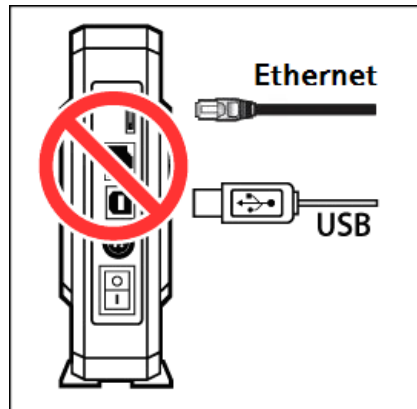
### Single Host Modes

You can connect your device directly to a single computer's USB 2.0 port or by eSATA (if equipped).



## Chapter 2 Cable Installation

**Warning:** Do not connect the USB or eSATA or Ethernet cables at the same time.



### 2.1 NDAS Mode

**Note:** NDAS connection software does need to be installed on each computer in order to use your device in NDAS mode..

1. If your NDAS device has dip switches on the rear panel, flip both dip switches down.
2. Connect the included Ethernet cable from the Ethernet port on the NDAS device to a switch.  
**Wireless users:** Connect the NDAS device to your wireless router or Airport with the included Ethernet cable.
3. Make sure the power connector is firmly attached to the NDAS device and connect the power adapter to a power source.
4. If your NDAS device has an On/Off switch, slide the On/Off Switch to the ON position.

## 2.2 USB Mode

**Note:** NDAS Utility software does **not** need to be installed to use in USB mode.

1. If your NDAS device has dip switches on the rear panel, flip both dip switches up.
2. Connect the included USB cable from the USB port on the NDAS device to your computer's USB port.
3. Make sure the power connector is connected firmly to the NDAS device and connect the power adapter to a power source.
4. If your NDAS device has an On/Off switch, slide the On/Off Switch to the ON position.

## 2.3 eSATA Mode

**Note:** NDAS Utility software does **not** need to be installed to use in sSATA mode.

1. Connect the included eSATA cable from the eSATA port on the NDAS device to your computer's eSATA port.
2. Make sure the power connector is connected firmly to the NDAS device and connect the power adapter to a power source.
3. Switch the On/Off switch to the ON position.

## Chapter 3 NDAS Software Installation

### 3.1 Installing NDAS Utility 1.8 Software

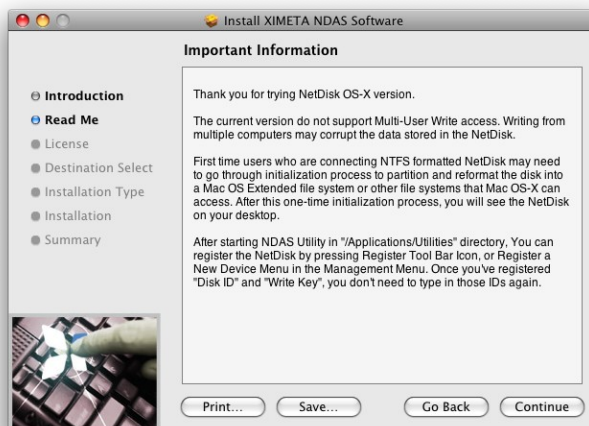
Installing NDAS software is simple and easy. If downloading software, please double click the disk image and click on “NDAS software Installer.mpkg” to begin installation.

If you are using the Installation CD, insert the CD into your CD-ROM drive and select “NDAS software Installer.mpkg”.

1. **Introduction – NDAS Installer** appears. Click the **Continue** button to continue to the next step.

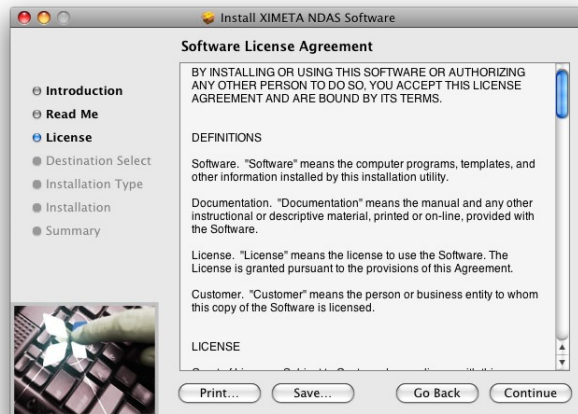


2. **Read Me – Carefully read the installation notes then click Continue.**

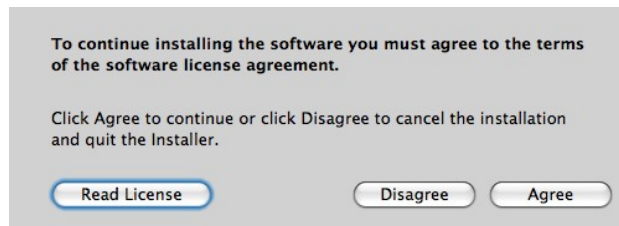




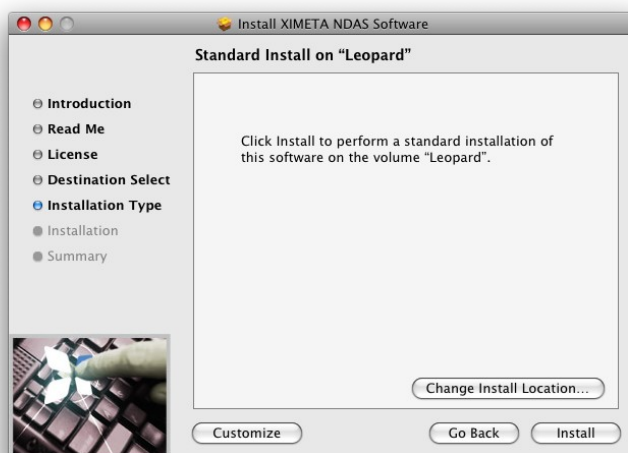
3. **License** – Carefully read the **Software License Agreement** and click **Continue** when finished.



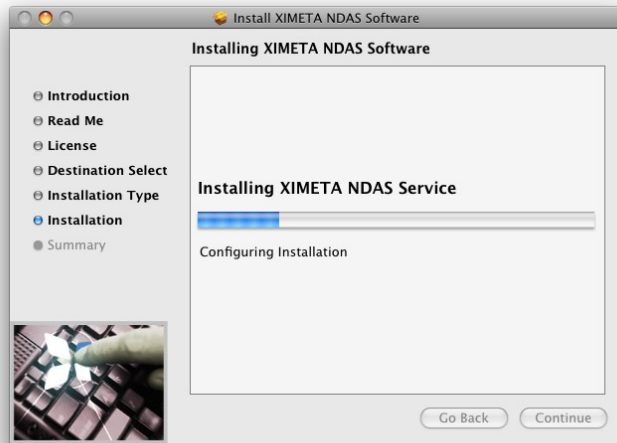
- 3.1. Click on **Agree** to Accept the User License.



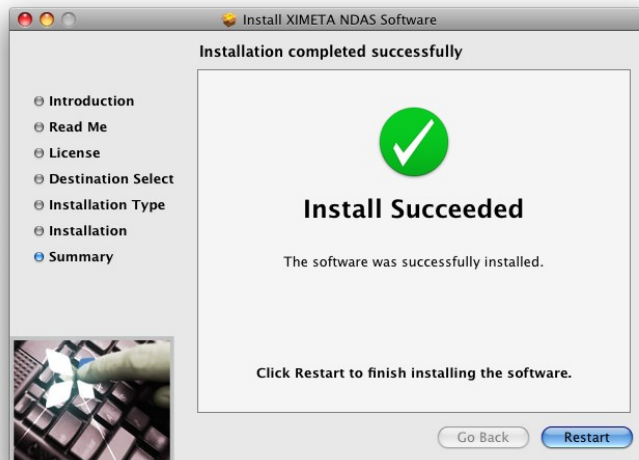
4. **Install** – Click **Install** to begin installing the NDAS Software.



5. Please wait while the NDAS Software installs.



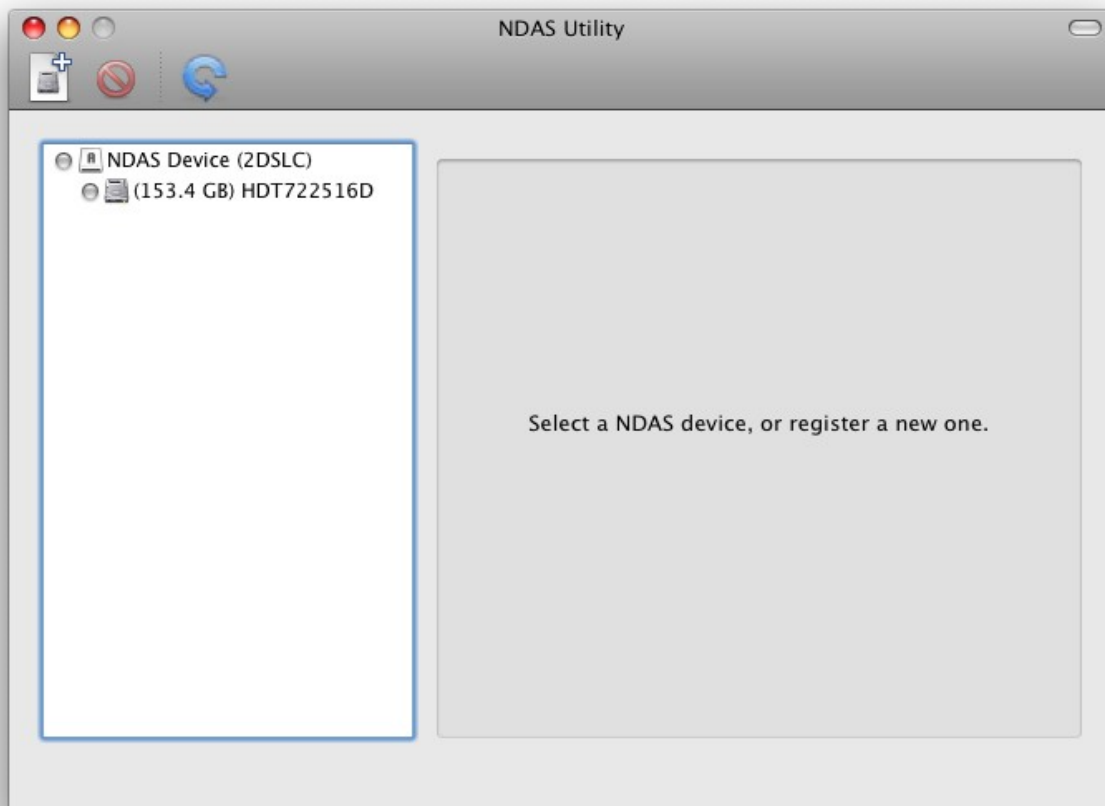
6. **Finish Up** – Click the **Restart** button to complete the installation.



## Chapter 4 NDAS Device Registration

### 4.1 Register a New NDAS device Automatically.

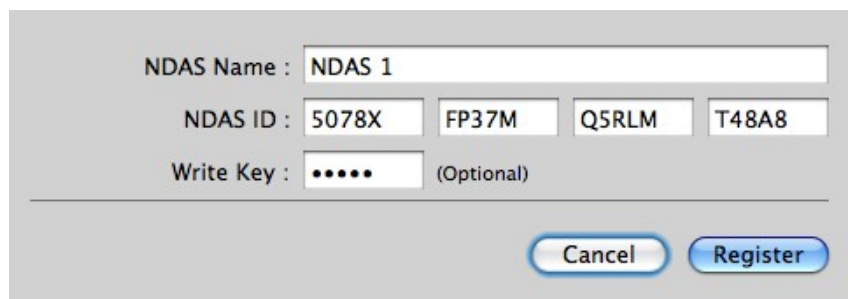
1. Connect a New NDAS Device following the instructions in section 2.1
2. Click on the **NDAS Utility** Icon located in your Utilities Folder.
3. Your Auto Registered NDAS Device will appear as in the image below.



**Note:** NDAS Devices that do not have “auto register” capability will not appear. Also, if the “Prevent Auto Registration” routine (Chapter 8) has been run on your NDAS device, it will not appear. Such devices must be registered manually (Chapter 4.2)

## 4.2 Register a New NDAS device Manually.

1. Click on the **NDAS Utility** Icon located in your Utilities Folder.
2. Click the **Register a New Device** icon in the upper left hand corner of the window.
3. **NDAS device Registration sheet** will appear.
4. Enter a name for the NDAS device then add your **NetDisk's NDAS ID** and **Write Key**. The **Write Key** is needed to write to your NDAS device. Once entered, Click **Register** to continue



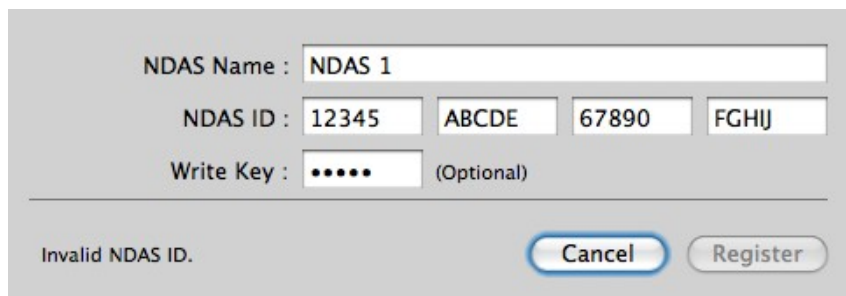
The screenshot shows a registration form with the following fields and values:

- NDAS Name : NDAS 1
- NDAS ID : 5078X FP37M Q5RLM T48A8
- Write Key : ..... (Optional)

At the bottom right, there are two buttons: "Cancel" and "Register". The "Register" button is highlighted in blue, indicating it is the active state.

### Note:

- The NetDisk's NDAS ID and Write Key do not contain the letter O. Please use only the number 0.
- If your NetDisk's NDAS ID and Write key are not typed in correctly, The 'Register' button will not available..



The screenshot shows the same registration form as above, but with an error message displayed at the bottom left: "Invalid NDAS ID." The "Register" button is now disabled and greyed out, while the "Cancel" button remains active.

### 4.3 Register a New NDAS device by registration file.

You can easily register an NDAS device by opening an NDAS registration file. (See Chapter 9 for details on how to prepare and save this file.) The extension of the NDAS registration file is “.ndas” and will appear as in the image below.



There are two ways to register with this file.

1. **Double clicking** the NDAS registration information file.

When you double click the NDAS registration file, the NDAS Utility will appear and register the NDAS Device automatically.

2. **Open** the NDAS registration file from the **NDAS Utility**.
  1. Click on the **NDAS Utility** Icon located in your Utilities Folder.
  2. Choose **Open NDAS registration information file...** from the **File** menu.
  3. Locate and select the NDAS registration file.
  4. The NDAS Device will be registered automatically.

## 4.4 Sharing Your NDAS device

Once an NDAS device is connected to your network, it can be accessed from many computers on your LAN.

The following conditions are required to share an NDAS device:

### **Mac OS Environment:**

- All computers and NDAS devices must be on the same LAN segment.
- The NDAS device must be connected via Ethernet to a switch or Wireless Router.
- The NDAS software must be installed on each system.
- Only one computer can have Read/Write access to the NDAS device at a time.
- All other users must have the device mounted in Read Only mode.
- The NDAS device must be registered on each computer.

### **Warning:**

- **DO NOT** perform disk operations (**format, partition**) when multiple systems have the NDAS device mounted.
- The NDAS device can be formatted or partitioned **ONLY** when **one** system is connected.

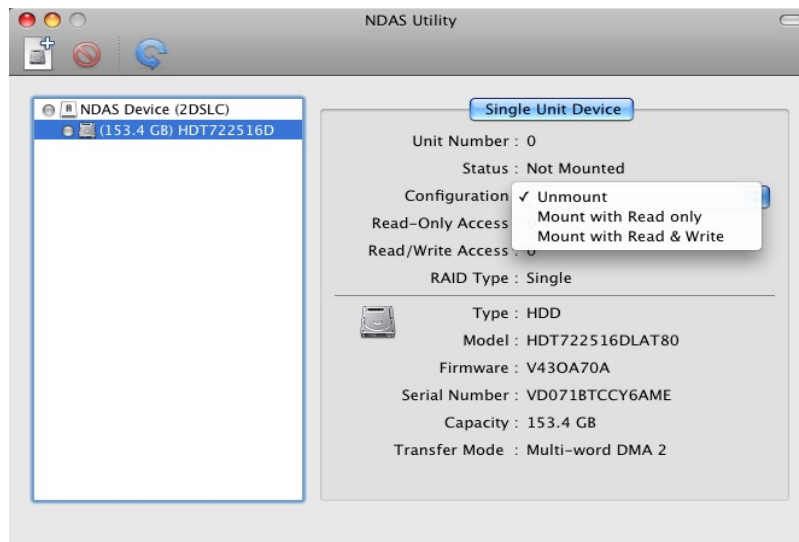
## Chapter 5 NDAS Utility

The **NDAS Utility** is the software that allows you to control your NDAS device(s) and also provides detailed information about the NDAS device that is registered on your system.

To get to the **NDAS Utility** open your Mac Hard Drive, then open your Applications folder, then your Utilities Folder. The **NDAS Utility** should be listed in the Utilities folder.

Click the **NDAS Utility**. All registered NDAS device(s) will be displayed on the **NDAS Utility Menu**.

- **NDAS Utility** – Lists and controls all NDAS devices that are registered.
- **Register a New Device** – (Disk Icon in top left corner) Registers an NDAS device on your computer.
- **Unregister the Selected Device** – (Red Circle with bar in top left corner) Removes the NDAS device from the system.
- **Refresh All Devices** – (Blue circular arrow on top left corner) Refreshes the status of all NDAS Devices.
- **NDAS Device List** – (Left side white area) Displays all registered NDAS Devices.
- **Device Status Area** – (Right side gray area) Shows the type of device (Single or Multiple Unit Device), the mount status of each unit available in the NDAS device as well as information regarding the actual disk(s) inside the NDAS device.
- **Configuration** – This is where you will change the Mount status of your NDAS device. Available options will be **Unmount**, **Mount Read Only** and **Mount Read/Write**.



## Chapter 6 NDAS device usage

Now that you have successfully installed your NDAS software, it's time to familiarize yourself with using the NDAS device. Once the NDAS device is mounted, it will appear on your Desktop.

Here are a few functions for NDAS devices.

- You can use NDAS devices like any other hard drive on your system.
- Drag and Drop files.
- Copy and paste data to NDAS devices.
- Make and delete files/folders.
- Share files and folders
- Backup files directly to the NDAS device
- Use the NDAS device as Time Machine®<sup>1</sup> drive for Mac OS X 10.5.x Leopard.

### 6.1 Read Only and Read / Write Mode

NDAS devices provides users with 2 main functions; **Read Only and Read / Write.**

#### Read Only Mode

- Any number of users or applications can read from an NDAS device.

#### Read / Write Mode

- Only one user can write to a specified NDAS device at a time.
- No other users can have Read/Write Access to the NDAS device until it is switched to Read Only mode or dismounted.

---

<sup>1</sup> Time Machine® is the trademark of Apple Inc.

---

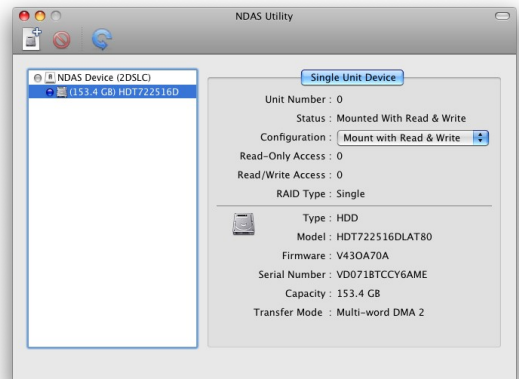


## 6.2 Changing Read Only or Read / Write Mode

Open your NDAS Utility by clicking on your Macintosh HD icon on your Desktop, double click on your Applications Folder, then your Utilities folder.

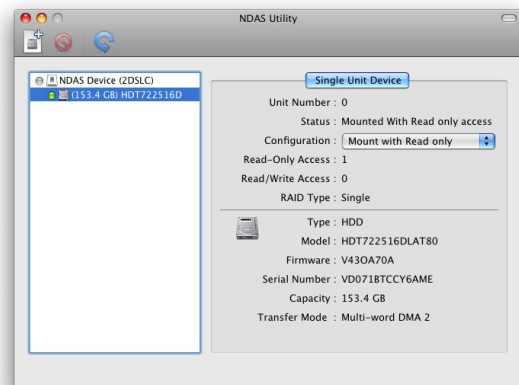
### Mount with Read Only Mode

- Select the NDAS device you want to mount.
- Mouse over the Device Status Area.
- Under Configuration select **Mount Read Only**.
- The **status** will now show **Mounted with Read Only**



### Mount with Read / Write Mode

- Select the NDAS device you want to mount.
- Mouse over the Device Status Area.
- Under Configuration select **Mount Read / Write**.
- The Status will now show **Mounted with Read / Write**



Only when both the Configuration and Status display the mount information is the NDAS device in that state.

**NOTE:** The status can be changed by specifying a command, only if no user or application is using the NDAS device. If a user or application is using the NDAS device, the status will not change.

## Chapter 7 Using NDAS devices in a Mixed Environment

### 7.1 Mixed Environment with Mac and Windows

- All computers must be on the same LAN with the same Subnet.
- The NDAS device must be connected via Ethernet to a Router/Switch.
- To share the NDAS device each computer must have the appropriate NDAS software driver installed
  - On Windows XP/2000, install version 3.xx or higher
  - On Windows 98se/ME, install version 1.x
  - On Mac OS X, install version 1.8.x or higher
- The NDAS device must be registered on each computer.
- Read / Write access can only be granted to one MAC at a time. The rest of the computers must connect in Read Only Mode. If mounting Read / Write fails because another user has the device mounted, you may choose to request the Read /Write privilege. Once the Read/ Write access is released by the other computers, you can connect in Read / Write Mode.

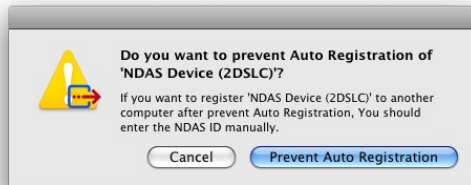
**NOTE:** Some NDAS devices come pre-formatted as NTFS. In order to use the NDAS device in a Mixed Environment you must format the NDAS device from the Mac in a MS-DOS File System using Disk Utility. MS-DOS file system (also known as FAT32) is the only File System that Mac and Windows can both Read and Write to.

## Chapter 8 Preventing Auto Registration of the NDAS device

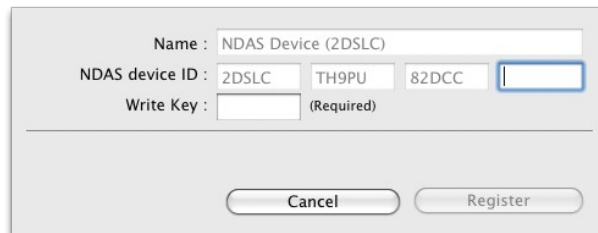
The “Auto Registration” capable NDAS Devices are registered automatically and can be used by the all computers on the same LAN. You can prevent Auto Registration so that the device cannot be used by the computers that did not register by entering the NetDisk’s NDAS ID manually.

### 8.1 Remove the “Auto Register” Capability of your NDAS Device

1. Choose **Prevent Auto Registration...** from the **Management** menu.
2. Press **Prevent Auto Registration** button.



3. Enter a **NetDisk’s NDAS ID** and **Write Key**. Once entered, Click **Register** to continue

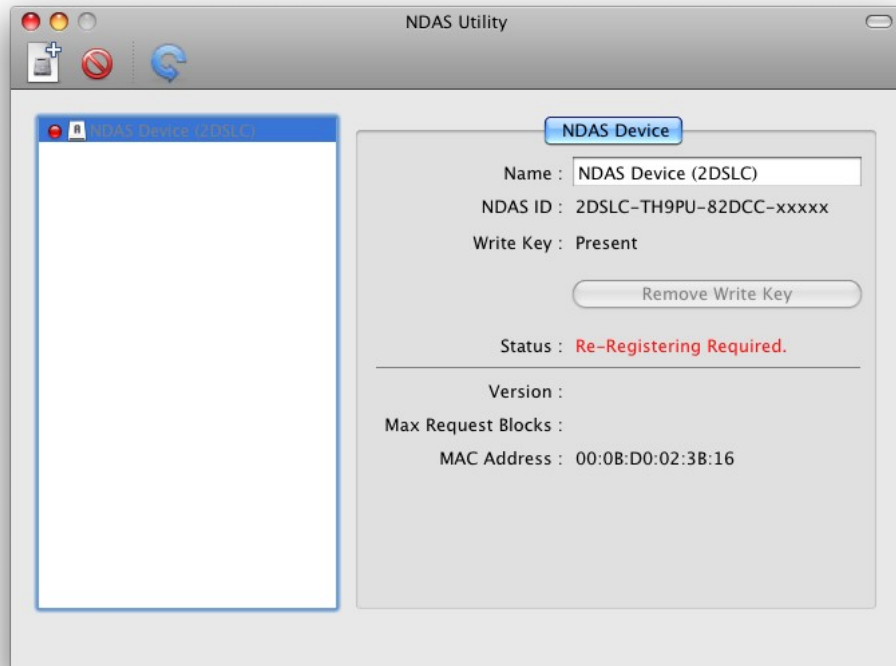
A registration form with the following fields: "Name : NDAS Device (2D5LC)", "NDAS device ID : 2D5LC TH9PU 82DCC" (with a cursor in the last box), and "Write Key : (Required)". At the bottom, there are two buttons: "Cancel" and "Register".

#### NOTE:

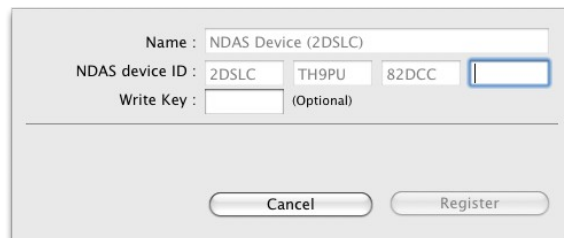
- If you choose to Prevent Auto Registration, you cannot revert the NDAS device to "Auto register" capable again. It will be a permanent change.
- PLEASE CHOOSE CAREFULLY!
- You have to connect the NDAS device and unmount all drives before attempting this procedure.
- It will take about 5 seconds to complete.

## 8.2 Re-Registering a converted NDAS Device

Any NDAS device that had been auto-registered must be re-registered if another computer performs the “Prevent Auto Registration” procedure.



1. Choose **Re-Register Device...** from the **Management** menu.
2. Enter the **NetDisk's NDAS ID** and **Write Key**. Once entered, Click **Register** to continue.



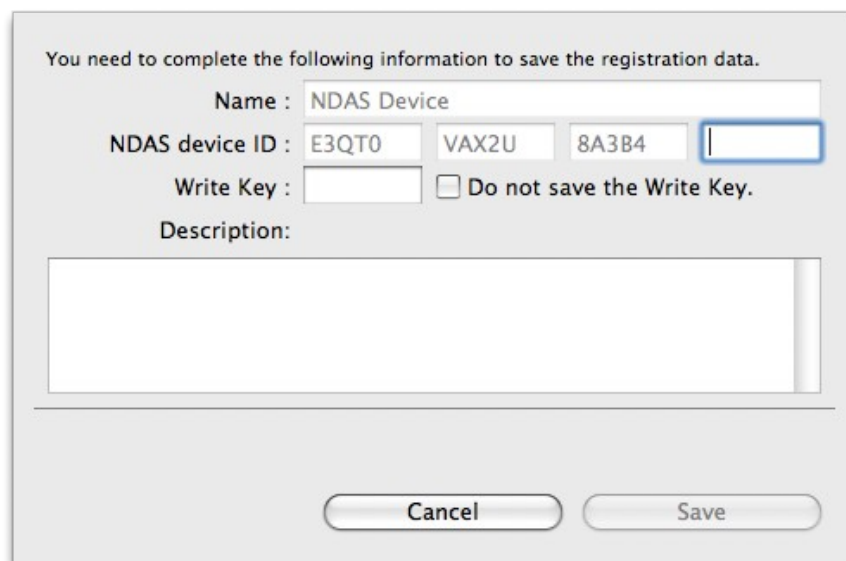
3. Press **Register** button.

**NOTE:** It will take about 5 seconds to register.

## Chapter 9 Saving the NDAS Device Registration Information

You can save the NDAS Device registration Information for a manually registered (Chapter 4.2 and Chapter 4.3) device to make it easier to register that NDAS device next time or on multiple computers.

1. Select the **NDAS Device** from the **NDAS Device list**.
2. Choose **Save NDAS registration file...** from the **File Menu**.
3. Complete the **NDAS ID** and enter the **Write Key**. The **Write Key** and **Description** are optional. Once entered, Click **Save** to continue.



The dialog box is titled "You need to complete the following information to save the registration data." It contains the following fields and controls:

- Name :** A text field containing "NDAS Device".
- NDAS device ID :** Three text fields containing "E3QT0", "VAX2U", and "8A3B4". A fourth empty text field is highlighted with a blue border.
- Write Key :** A text field and a checkbox labeled "Do not save the Write Key." which is currently unchecked.
- Description:** A large empty text area.
- Buttons:** "Cancel" and "Save" buttons at the bottom.

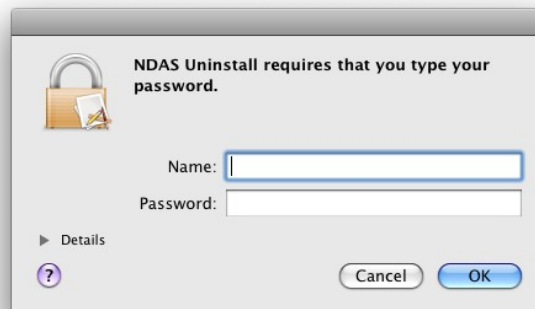
4. Choose a **folder** to save the file and click the **Save** button.

## Chapter 10 Uninstall

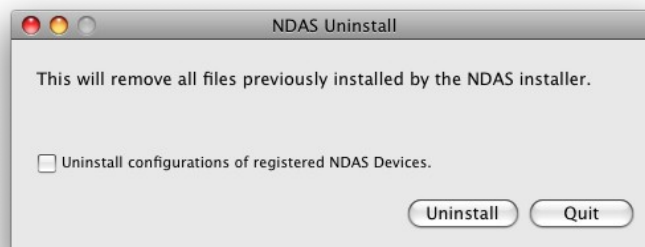
Insert the included "NDAS Installation CD" into your CD-Rom. There you will find the NDAS Uninstaller.

Start the Uninstaller by double clicking the **NDAS software Uninstaller.app**

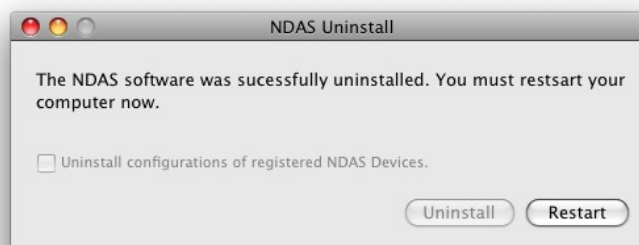
1. Enter and Administrator's **Password**.



2. Click **Uninstall**.



3. Once finished, click **Restart**.



## Chapter 11 FAQ

For the most recent list of FAQs, please visit <http://www.ximeta.com>

### 1. How do I Disconnect NDAS device?

To disconnect an NDAS device, we always recommend using the Eject option before dismounting from the NDAS Utility. If you CONTROL + click on the NDAS device on your Desktop, then you will be given an option to Eject the NDAS device. You may also drag the NDAS device into your Trashcan. After that, you can go into NDAS Utility and unmount your NDAS device.

If you are using USB, then Ejecting the NDAS device is all that is needed.

### 2. I have installed the Mac Drivers and NDAS device will not Enable.

Make sure you have the latest drivers, available at the Download Center.

Please check the following:

Verify that your cables are plugged in correctly and that you have a link on the switch where the NDAS device is plugged into. Make sure that it is formatted to a file system that your Mac can recognize. You can run Disk Utility (Application > Utilities > Disk Utility). This will allow you to see the drive and format it to Mac OS Extended or MS-DOS File System. When plugged in via NDAS (Ethernet), please try enabling Read Only mode and reboot your Mac. It should show up on your desktop as a Hard Drive. Then use the NDAS Utility to enable Read/Write mode.

If that still does not work, just to make sure the NDAS device is fine, try plugging it in via USB to see if it is recognized. If that works, then try reinstalling the NDAS device software. If it still does not mount, then try formatting the NDAS device again via USB and retry Enabling the drive.

### 3. How should I format NDAS device?

It is recommended to format NDAS device to Mac OS Extended format using the Disk Utility (Applications > Utilities > Disk Utility). If you also have a Windows computer as well, and would like to use it between the two, then you must format it to FAT32 for it to be recognized on both computers. You may use the "MS-DOS File System" option to format the disk in FAT32.

4. The NDAS device mounts up fine and I can see it on my desktop, but it disappears randomly and reappears. What is going on?

This problem can occur if the connection between your computer and the NDAS device are a little unstable. Make sure that you are not using any Hubs, and that only Switches are being used to connect your computers and the NDAS device to each other. If you are using a wireless connection, make sure your signal strength is strong.

Try to connect the NDAS device directly to your Ethernet port on your Mac to see if the connection is stable. This will ensure that the NDAS device's Ethernet port is fine. If your connection stabilizes, then try replacing your Ethernet switch or router.

If the problem persists with any switch or router, a newer software version may fix your issue. Check the Download Center for possible updates.

#### **5. Can I access the NDAS device from my Mac in a windows OS network?**

Yes you can, but there are limitations writing to the NDAS device with this setup. First it is best to format the NDAS device to FAT32. Once you register the NDAS device from your Mac, you will not be able to have write access if another windows OS computer has mounted read write. However the NDAS device can be used for windows file sharing and can map from the Mac. This way everyone can get read and write access to the NDAS device without a problem.

#### **6. Can the NDAS device be left on over night?**

Yes, your NDAS device can be turn on 24 / 7. Before you turn off your computer we do recommend that you unmount the NDAS device to limit future problems with your NDAS device.

#### **7. When adding NDAS device to my computer, it tells me that my ID and Key are invalid. What's wrong?**

You may not have entered all the alpha-numeric values correctly. There are no letter "O"s; please verify that you have used the number "0" (zero) for anything resembling an "O." Also please check your other letters as well; two V's may look like a W. Start by entering only the NetDisk ID(NDAS ID). The ADD button should not be grayed out if the correct ID is entered. Once it is not grayed out, proceed to add the Write Key as well.

Please also make sure that there are 20 characters for the NetDisk ID (NDAS ID), not including the Write Key.



**8. I cannot enable read/write access on more than one machine.**

With our current Mac drivers, only one machine can have read/write access at a time. The other machines will all have read-only access. We are working on a multi-write driver for Mac, and is expected to be released sometime in the future.

**9. Why can't my computer go into hibernation or standby?**

If you want to use your computer in hibernation or standby, you must have NDAS device disabled before that can occur. You can disable the NDAS through the NDAS Utility.

**10. It takes over a minute for the NDAS device to show up on my desktop after enabling.**

If you are running your Mac on a wireless connection, this may happen. A wireless connection may take some time to properly obtain a stable connection with the NDAS device. If your NDAS device is formatted in FAT32, this may also cause the mount to take long. If you wish to improve the speed, try reformatting the NDAS device in Mac OS Extended (only if you have a Mac ONLY environment). Later software releases may increase speeds, so make sure you have the latest driver release.