



RSH-300 User Guide

3.5" HDD BASED MULTI A/V PLAYER RSH-300
A total solution for your digital entertainment





RSH-300 USER GUIDE

Table of Contents

RAPSODY RSH-300

● Product features 3
● Safety and Other Instructions 4~5
● Product Specification 6
● Product Contents and Descriptions 7~8
● HDD Installation 9
● HDD Partition Setup and Format (Win2000/XP) 10~14
● Video Cable Connection 15
● Audio Cable Connection 16
● Remote Controller 17~20
● Setup Menu Setting 21~22
● Main Menu Screen 23~24
● Movie Play 25
● Photo Play 26
● Music Play 27
● Virtual DVD 28
● Firmware Upgrade 29
● Firmware Recovery 30
● Troubleshooting 31
● Warranty 32



Product Features

www.rap-sody.com



RSH-300 is a new type of entertainment device with 3.5" hard disk mounted inside. You can play various multimedia data including video, music and image files saved in a PC by connection this device to PC with USB cable.



- **Used as a high resolution multimedia player by connecting to TV** (Optimization of firmware allows the highest operation speed in its class on the market)
- **Used as a USB2.0 high-capacity portable storage device by being connected to PC** (NTFS / FAT32))
- **Support digital TV-compliant component 480p, 720p, 1080i progressive scan.**
- **Optical output for digital 5.1 channel sound**
- **Virtual DVD function of playing high-resolution DVD file as clear as original**
- **Persistent support for firmware upgrade at homepage.**





Please note the following precautions before use. Also, please pay special attention to additional cautions marked [Caution] in this User Guide.

● ● ● Proprietary Data

Proprietary contents such as software, sound sources and videos are protected under relevant laws including the Copyright Act. Users should be held liable for any violation to the Copyright Act or Privacy Law using this product.

● ● ● Codec Support

This product does not support all codecs to play media files. Please confirm the kind of codecs supported. Also, even in case of supported codec, media files are not played as normal or are not in normal operation depending on the characteristics of file or user environment.

● ● ● Data Storage

Please keep data saved in this product in a separate safe place. We are not liable for any loss or damage of stored data.

● ● ● Use In Vehicle

Please use designated power adapter sold separately for use in a vehicle. As operation of this product may distract your attention, do NOT use this product while driving. If this product is used when the engine is stopped, it may not be operated as normal due to voltage difference and may lead to electric discharge of the vehicle.

● ● ● Impact

Do NOT impact or drop this product, which can lead to malfunction.

● ● ● Foreign Objects

Never push any metals such as coins and hair pins or flammable objects of any kind into this product, which could result in circuitry malfunction or a fire.

● ● ● Self-Service Prohibited

Do not break up, service or remodel this product for yourself, which could result in malfunction of

this product. Warranty services are not applied to remodeled products.

● ● ● Loading

Do NOT put heavy objects on this product, this can result in damage to this product or personal injury.

● ● ● Water and Moisture

Do not let this product contact with water or liquids. If conductive liquids like water leaked into this product, immediately disconnect power and turn it off as that could result in a fire hazard or electric shock.

● ● ● Chemical Agents

Do NOT use chemical agents or detergents, this could damage the surface of this product.

● ● ● Heat

Do not expose this device to heat or sunlight. Also, do not keep or leave it in high temperature for a long time.

● ● ● Magnets and Magnetic Force

Do not put this device near ant apparatus generating strong magnetic force, this could lead to malfunction or deletion of data inside.

● ● ● Eye/Ear Protection

Watching TV for a long time or tuning the TV volume louder may cause vision or hearing damage.

● ● ● Fire

If abnormal phenomenon such as smoke or order is detected while using this product, immediately turn the power off, remove power adapter and ask for servicing.

● ● ● Our Of Reach Of Children

Do not let infants or babies touch or suck this device and do not place it within the reach of babies or children, there is a danger of personal injury.



● ● ● Power Supply Maintenance

Do not put a lot of power plugs at the same time and make certain that power plug is inserted tight. Do not turn the power off while using and never forget to get rid of power adapter after use.

- Any part of this User Guide cannot be copied in any form or by any means (including electrical copy, mechanical copy, copy by copy machine, disk copy, etc.), reproduced or saved, introduced or transmitted into search system without the written permission permission of Dacos Technologies Co., Ltd. Except rights expressly granted to the user by Dacos Technologies Co., Ltd. upon the use of this product, supplying this document does not permit any license in relation to patent right, trademark right, copyright or other property rights.
- Rapsody is registered trademark of Dacos Technologies Co., Ltd.
- Microsoft Windows 98, windows 98SE, Windows ME, Windows 2000, Windows XP are registered trademarks of Microsoft Corporation.
- Dacos Technologies Co., Ltd. may modify the standard of hardware and software or other components in the package to enhance the functionality of this product without prior agreement of individual users.



Product Specifications

www.rap-sody.com

Video	Codec	MPEG1/2/4, DivX, XviD, WMV9
	Format	AVI, MPG, MPEG, DAT, M2P, M2V, VOB, IFO, ISO, M4V, MP4, TP, TRP, TS
Audio	MP3, WMA, AAC, WAV, AC3	
	DTS down mixing / Pass through	
Photo	JPEG	
Video Output	COMPOSITE	
	COMPONENT (480p, 720p, 1080i)	
Audio Output	ANALOG(STEREO), OPTICAL(5.1CH)	
USB Interface	USB 2.0 HOST / USB2.0 DEVICE(USB1.1 COMPATIBLE)	
HDD File System	FAT32 / NTFS	
HDD Type	3.5" IDE	
Dimensions	129(W) X 210(H) X 47(D)	
Weight	420g(WITHOUT HDD)	
Temperture	0 ~ 60 °C	
Power Source	12V 3A AC/DC ADAPTER	
	FREE VOLTAGE (AC 100 ~ 240V ,50 ~ 60Hz)	

3.5" HDD BASED MULTI A/V PLAYER RSH-300



System Requirements (for PC)

www.rap-sody.com



► PC Requirements for USB Connection

- USB 2.0/USB 1.1 Interface (USB 2.0 recommended)
- Operating System: Windows 98SE/ME/2000/XP, Linux 2.4 or later, Mac OS 9.1 or later



Product Contents & descriptions

www.rap-sody.com



RSH-300



Remote
Controller



Battery(AAA×2)



A/V Cable



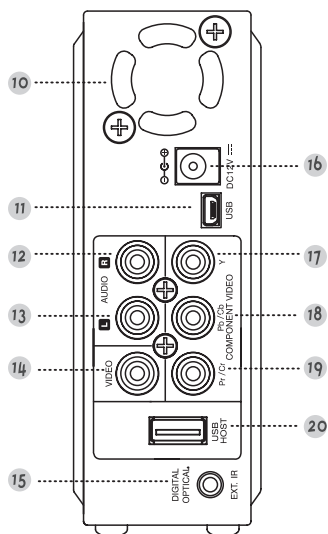
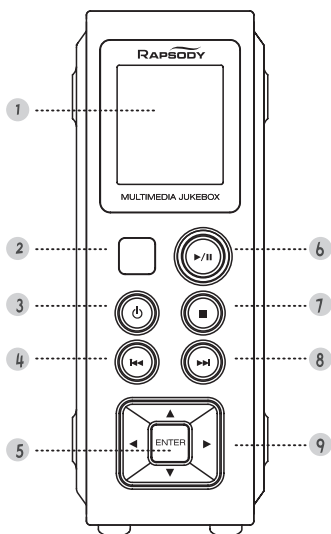
USB Cable



Adapter for Home



User Guide





1 LCD

128 X 128 Full Graphic 4 Gray LCD. Displays information of currently played music file even when RSH-300 is not connected to TV.

2 Remote Control Sensor

Aim remote control to this sensor.

3 Power

Turns RSH-300 on and off.

4 Previous File

Move back to previously played file.

5 ENTER

Works same as OK button on the remote control.

6 Play/Pause

Plays or pauses all files in current folder.

7 Stop

Stop playing media files

8 Next file

Move forward to next file.

9 Navigation Button

Navigate among menu items. In playback mode, right and left button works as fast forward and fast rewind respectively.

10 Cooling Fan

Cools down HDD.

Dusty cooling fan causes noises. Please clean this area often.

11 USB port

USB 2.0 port is used to connect to a PC.

12 Audio R

Right audio output of 2 channel audio. Connect red audio cable to this output jack.

13 Audio L

Left audio output of 2 channel audio. Connect white audio cable to this output jack.

14 Composite Video

Standard video output. Connect yellow video cable to this output jack.

15 • • External Remote Control Connection Jack

Connect external remote control provided for optional car accessories to this jack.

• • Digital Optical

Output for 5.1 channel sound for home theatre amps or receiver which supports optical input. Connect digital optical cable to this output jack.

16 Power Connection Jack

Connect provided 12V adaptor or optional car cigar adaptor to this jack.

17 Component Video Y

Connect green component cable to this output jack.

18 Component Video Pb / Cb

Connect blue component cable to this output jack.

19 Component Video Pr / Cr

Connect red component cable to this output jack.

20 USB Host port

An external HDD, ODD, memory stick, etc, Can be Connected to this port.



Install HDD

www.rap-sody.com



Follow following step-by-step instructions to install a HDD. It is not as hard as you think, just follow the steps slowly.

1 Unscrew the screws on both side of the RSH-300.

Use a coin to unscrew the screws. Rotate the coin counter-clockwise to unscrew the screws.

2 Open both covers from RSH-300.

As shown in the picture, hold the RSH-300 tightly, and shake it just a little downward to open a cover from RSH-300. Perform the same action for the other cover.

3 Inside picture after open

Picture shown is inside of RSH-300 after open the covers from RSH-300. HDD power cable and Enhanced IDE cable toward to the power cable.



4 Picture after HDD is connected

Gently place the HDD into the RSH-300 as shown in the picture.



5 Screw the HDD holding screws

After HDD is placed in the RSH-300 properly, screw the HDD holding screws as shown in the picture.



6 Close covers

Insert the rear end of the cover first then push the front of the cover gently to downward when you close the covers back. Again, use a coin to screw the screws back in.



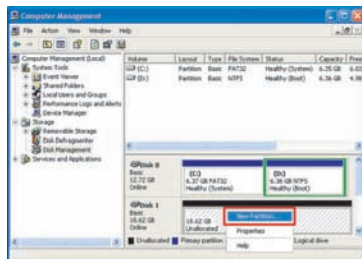
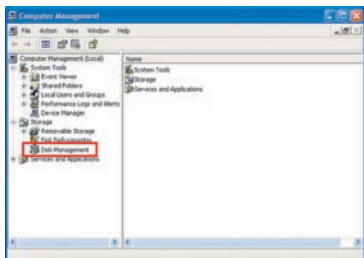


Note

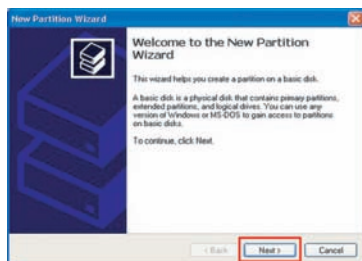
Non-formatted hard disks are not detected by PC.
If the hard disk is not formatted, please take the following steps to format it.
Newly purchased hard disks are not normally formatted.

1 Connect RSH-300 to a PC using a USB cable.

2 Select [Start > Control Panel > Management Tool > Computer Management] and then [Disk Management] under Computer Management menu.



7 When the New Partition Wizard is shown, click [Next] to continue.



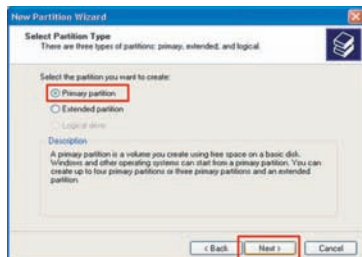
3 Click [Next] to continue when Write Signature and Disk Upgrade Wizard appears.

4 Select the disks you want to write a disk signature to and click [Next] to continue..

5 When Write Signature and Disk Upgrade Wizard is completed, click [Finish].

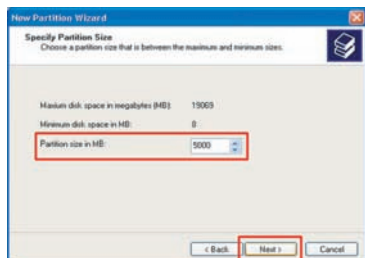
6 Right-click an [Unallocated] drive in Drive Management and select [New Partition] from the menu that appears.

8 Select [Primary Partition(P)] and click [Next] to continue.

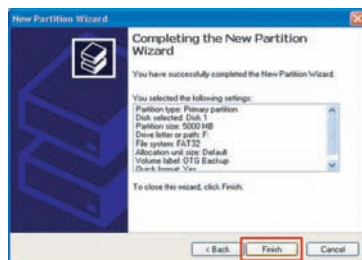




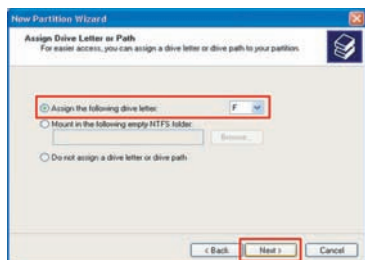
- 9 Enter the desired partition size in [Partition size in MB] and click [Next] to continue.



- 12 When [Completing the New Partition Wizard] appears, click [Finish].

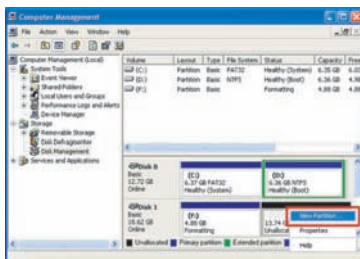


- 10 When the [driver letter] is assigned, click [Next].

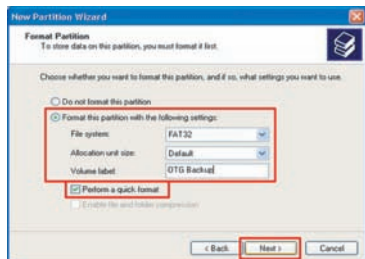


- 13 A new NTFS partition was created .

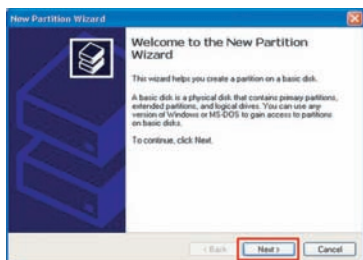
- 14 Right-click an [Unallocated] drive in Drive Management and select [New Partition] from the menu that appears.



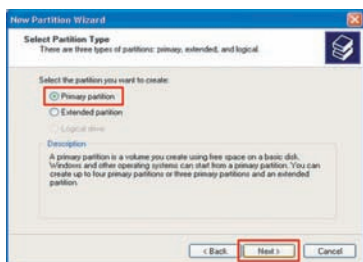
- 11 In the Format Partition window, select [Format this partition with the following settings] and **FAT32**, and then check [Perform a quick format] box. Click [Next] to continue.



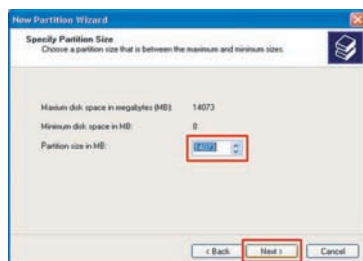
- 15 When the New Partition Wizard is shown, click [Next] to continue.



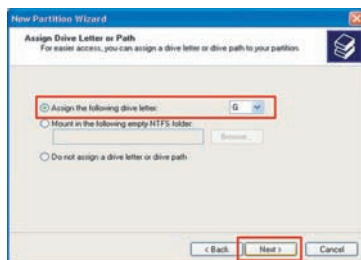
- 16 Select [Primary Partition(P)] and click [Next] to continue.



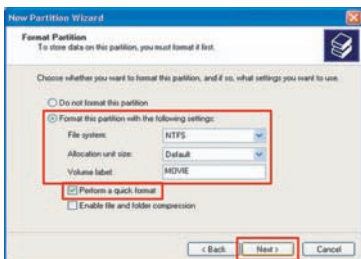
- 17 Leave the value for [Partition size in MB] as it appears and click [Next] to continue. (The partition size shown is the remaining hard disk size unallocated.)



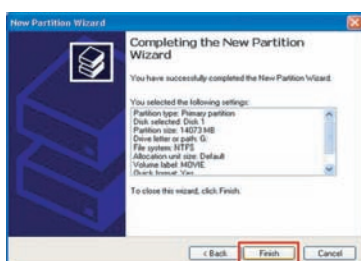
- 18 When the [driver letter] is assigned, click [Next].



- 19 In the Format Partition window, select [Format this partition with the following settings] and **NTFS**, and then check [Perform a quick format] box. Click [Next] to continue.



- 20 When [Completing the New Partition Wizard] appears, click [Finish].





Partitioning and Formatting Hard Disk(windows 2000/XP)

www.rap-sody.com

Caution

Drives formatted with NTFS file system are detected on Windows 2000/XP, but not detected on Windows 98/ME.

Do NOT select to use [Compressing Files and Folders] option.

If the specified file system is FAT32 on Windows 2000/XP, it is not possible to have one drive letter on large hard disk over 32GB. In order to have one partition, please perform partitioning and formatting on Windows 98/ME.

Also, Select [Primary Partition] to have multiple partitions on large hard disk over 40GB. If [Extended Partition] is selected, drives may not be detected.



Use on Macintosh

www.rap-sody.com

As this product is automatically detected on Macintosh O/S 9.x or later, there is no need for extra drivers. When stop using this product on Macintosh, discard the corresponding Desktop icon into Trash Bin and disconnect this product from USB port.



Available on Linux 2.4 or later.

• • • [Auto Mount]

After booting, log in as a root user.

Connect this product and turn the power on. Confirm whether this product's partition is detected using partition tool, fdisk. Make a mount pointer, for example, rapsody, in folder mount(/mnt) and edit /etc/fstab to add the following:

```
/dev/sda1/mnt/rapsody vfat nosuto, user 0 0 ->  
for HDD formatted with FAT32
```

```
/dev/sda1/mnt/rapsody ntfs nosuto, user 0 0 ->  
for HDD formatted with NTFS
```

You can use after log in again.

• • • [Manual Mount]

Create mount pointer in the same way as above and then mount this product by typing as follows:

```
Mount -t vfat/dev/sda/mnt/rhapsody -> for HDD  
formatted with FAT32
```

```
Mount -t ntfs/dev/sda/mnt/rhapsody -> for HDD  
formatted with NTFS
```

• • • Note • • •

It is assumed that RSH-300 is detected as sda in the example above. Drive name may subject to change depending on user environment. Please type the name of drive detected by USB Mass Storage.

[How to Stop Using Rapsody]

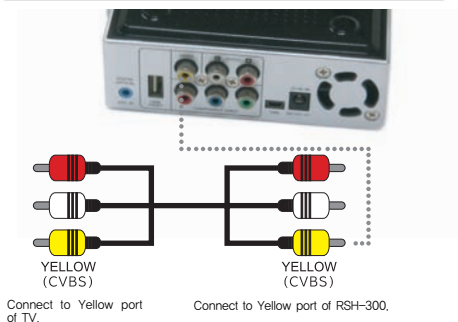
You can unmount Rapsody in Device Manager.



Connecting Video Cable

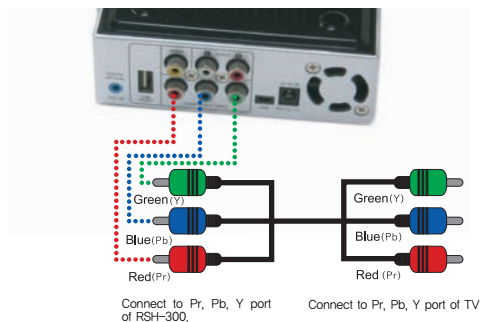
www.rap-sody.com

● ● ● Connect to TV using Composite cables



Connect a yellow (video) cable, red and white (audio) cables to the same colored jacks located on either rear or front of your TV, and the other end of the cables to the same colored jack of the RSH-300. Turn on the TV, and select the appropriate input. **Since RSH-300 provides various connection methods, choose the right one for your TV. Use of supplied cables is highly recommended.**

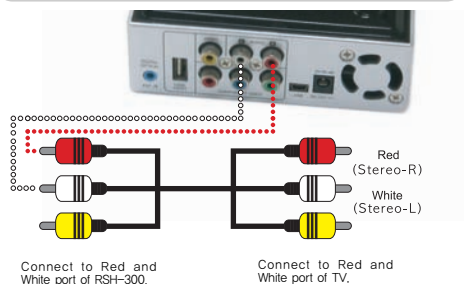
● ● ● Connect to TV using component cables



Connect component video output (Y – green, Pb – Blue, Pr – Red) to the same colored component input jacks on the back of your TV. Audio signals should be connected separately using analog audio cable. Resolution of the screen can be selected among 1080i, 720p, and 480p depends on your TV's capability. **Component cable is not supplied with RSH-300 package.**

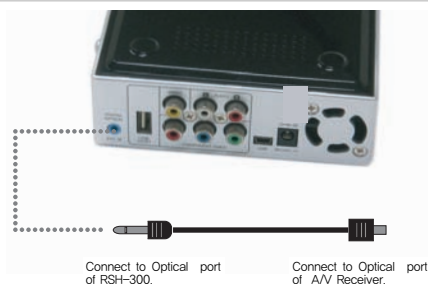


Connect 2 channel audio



Connect red and white audio cables from RSH-300 to same colored input jack of TV or audio device. **Use of supplied audio cables is highly recommended.**

Connect Digital Optical Cable

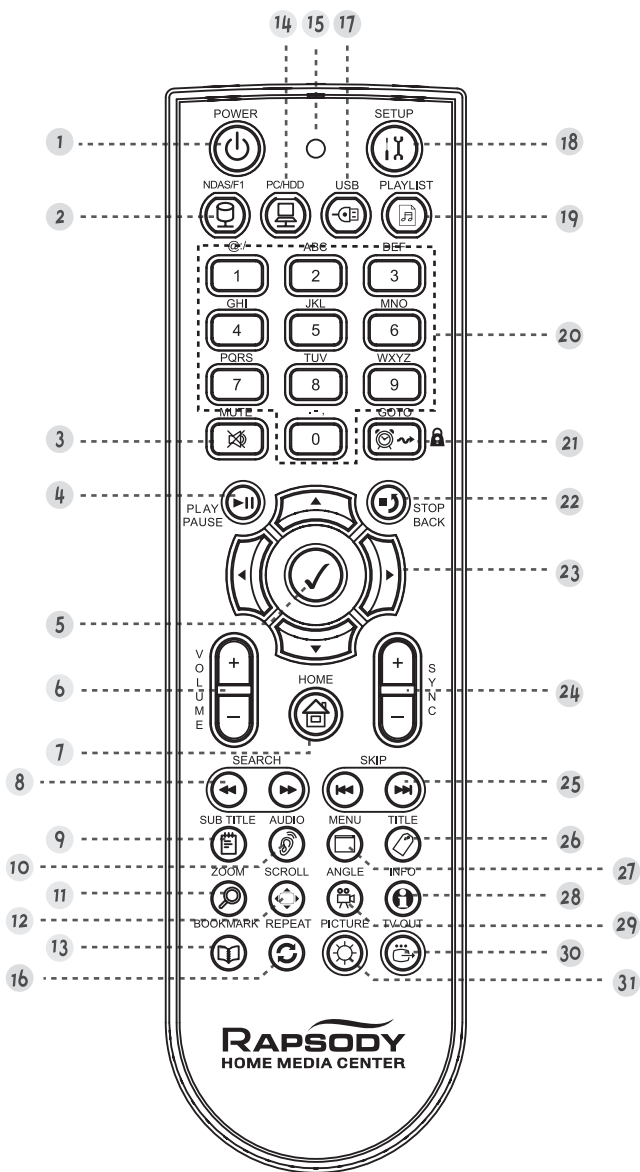


For those audio devices which has digital optical input jack, RSH-300 makes you to enjoy 5.1ch audio as if you are in a theatre. As shown in the picture, connect optical cable from digital optical output jack of RSH-300 to the digital optical input jack of your audio device. **Optical cable is not supplied with RSH-300 package.**



Remote Controller

www.rap-sody.com



< It is common use of N35 & RHS-300 >



1 Power Button

Used to turn the power on or off

2 F1

Special Function Menu Button

3 Mute

Cuts off the sound

4 Play / Pause

Starts or pauses the playback of movie, music, or picture files

5 OK

Selects a menu item or select a file to be played

6 Volume

Adjusts volume

7 Home Screen Shortcut

- Go to N35 s Home Screen Menu
- **1-Click:** Partition selection page for each mode
- **2-Clicks:** Go to N35 s Home Screen Menu

8 Search

Forward or backward search of the current movie (Each click doubles up the search speed - 2, 4, 8, 16, and 32 speeds).

9 Subtitle

Adjusts the subtitle setting

• • 1-Click:

Change the size of a subtitle (after changing the size using the UP and DOWN arrow, click on the OK button.)

• • 2-Click:

Change the color of a subtitle (after changing the color using the UP and DOWN arrow, click on the OK button.)

• • 3-Click:

Select multiple subtitles (When a subtitle file

contains more than two languages, click the button 3 times and select a subtitle language using the UP and DOWN arrow. Then click on the OK button.)

10 Audio

Selects a specific audio source when multiple audio sources exist in a movie file

11 Screen Zoom-In / Zoom-Out

Zoom-in or zoom-out the screen

• • 1-Click (Screen Zoom-in)

Customizes a zoom level using the arrow buttons (it will be implemented in the future)

• • 2-Clicks (Pan & Scan)

Fills up the screen preferentially based on the horizontal ratio of a movie file (but, some portion of the left and right side of the image are lost)

• • 3-Clicks (Full Screen)

Regardless of the aspect ratio of a file, fills up the screen

• • 4-Clicks (Default Screen):

Sets the screen to the original aspect ratio of a file

12 Scroll

Scrolls the position of the screen using the arrow buttons

13 Bookmark

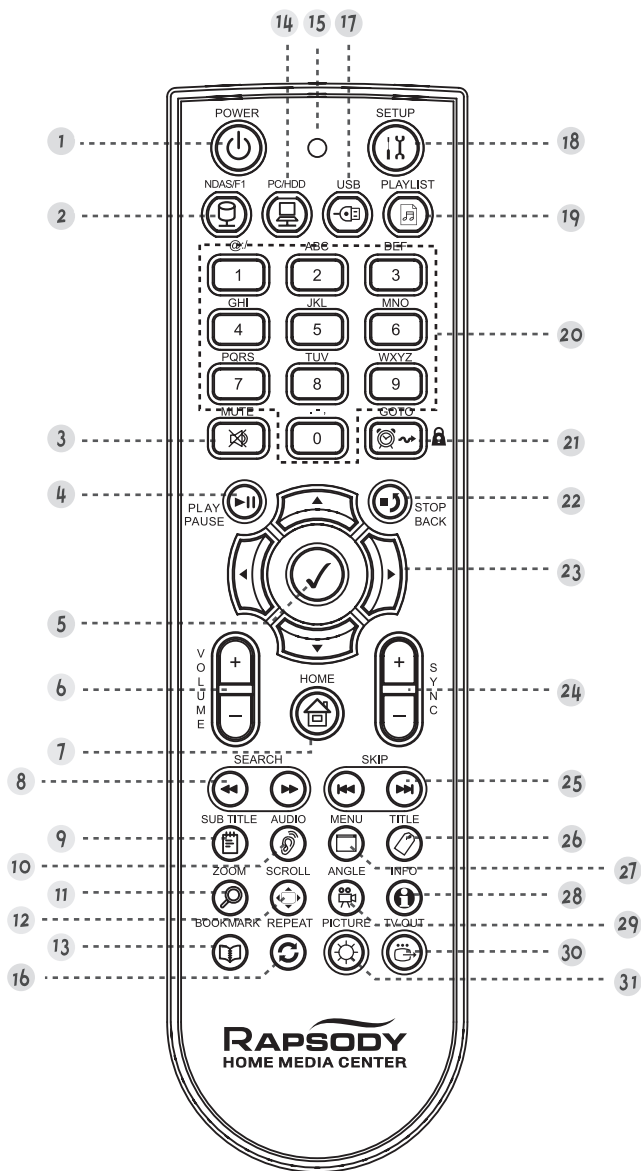
Saves a bookmark in the middle of media playback (Using the bookmark button to go to a desired bookmarked frame)

14 HDD Mode

Switches to the HDD search mode

15 Remote Controller Condition Display

When a button is pressed, a red LED blinks to show the operation of the controller.



< It is common use of N35 & RHS-300 >









16 Playback Mode Selection




Selects a playback mode for playing music or movie files (see the icon descriptions below)




 : 1-song repeat  : Unlimited repeat




 : 1-time playback  : random playback

   : unlimited repeat playback for all the files

   : unlimited repeat random playback for all the files

   : 1-time playback for all the files

   : 1-time random playback for all the files

   : unlimited repeat playback for a single file

They are used for navigating and selecting menu items. In case of a movie playback, do the following functions.

- **Up/Down:** Changing the position of a subtitle
- **Left/Right**

Movie: Jumping forward/backward by 30 seconds

Music: Jumping forward/backward by 15 seconds

24 SYNC

When a movie is not in sync with a subtitle, use this button to sync the movie and subtitle. Each click adjusts 1-second sync timing.

25 SKIP

Jumps to a next file during a playback. When used on a file list screen, it jumps forward/backward to different pages.

26 TITLE

During a DVD playback, it calls the title menu.

27 MENU

During a DVD playback, it calls the menu.

28 INFO

Displays the information of a played file

29 Multi Angle

During a DVD playback, it changes the camera angle. (only for multi-angle titles)

30 TV Output Mode

Changes the TV output mode according to the following order
(Composite -> Component)

31 Picture

Adjusts the brightness, contrast, and color. It selects a picture property according to the following order. (Brightness -> Contrast -> Color) Change the value of each property by using the left and right arrow button.

17 USB HOST Mode

Switches to the USB HOST mode

18 SETUP

Switches to the SETUP menu screen

19 Play List

This feature will be added in the future.

20 Number/Character Input Button

Used to enter numbers and characters for various menu items and options

In the mode of file browsing, this makes it possible to go to a specific file location quickly.

21 GOTO

Jumps to a desired time position during the playback

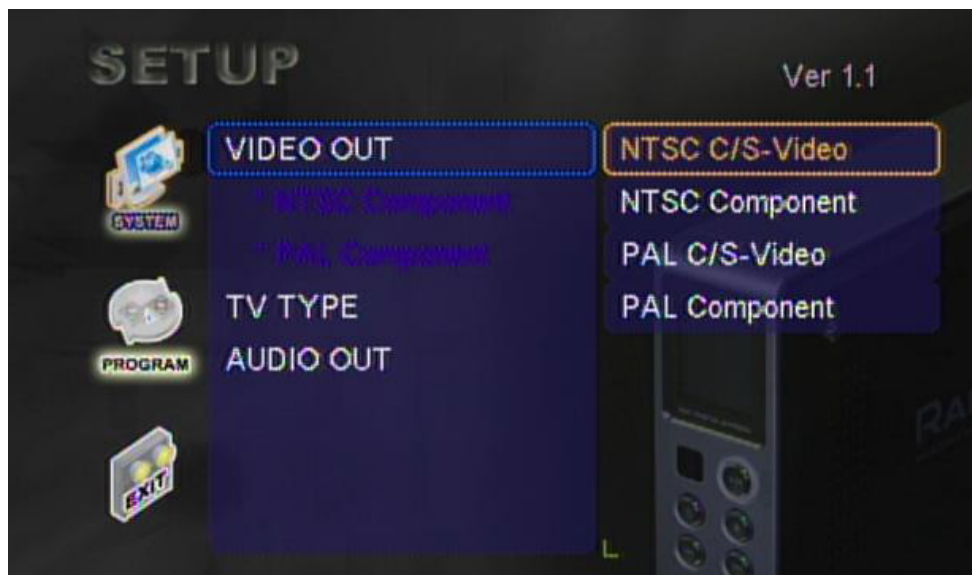
22 STOP

For stopping the current playback or going back to a previous folder

23 Arrow Buttons



The figure below is RSH-300 s SETUP screen.



For each menu item, possible options are described below.

1 SYSTEM

TV OUT

NTSC C/S : Video signals through the composite output terminal (Korea, USA, Japan, etc.)

NTSC Component : Video signals through the component output terminal (4 Available Resolutions: 480i, 480p, 720p, and 1080i) (Korea, USA, Japan, etc.)

PAL C/S -Video : Video signals through the composite output terminal (Europe, China, etc.)

PAL Component : Video signals through the component output terminal

(4 Available Resolutions: 576i, 576p, 720p, 1080i) (Europe, China, etc.)

TV Form

4:3 Letterbox

This aspect ratio displays the content based on its horizontal length. Black horizontal bars are placed by the player at the top and bottom of the screen to be displayed in a wide mode.

4:3 Pan & Scan

This aspect ratio displays the content based on its vertical length. It fills up the screen, but some portion of the left and right side of the image are lost.



16:9

Image output in the aspect ratio of 16:9

● ● Audio Output

Analog / DPCM

Analog 2 channel audio output

Encoded Digital

Digital audio signals through the optical or coaxial output terminal (no analog output)

2 PROGRAM

● ● Language Selection

Display by a selected language. It selects a language among Korean, English, Espanol, etc.

● ● Size Selection

Selects a subtitle size among Small-subtitle, Big-subtitle, and No-subtitle

● ● Color Selection

Selects a subtitle color among White/Black, Yellow/Black, Green/Black, White/Blue, Yellow/Blue, and Green/Blue

● ● Slide show Interval

1, 2, 3, 4, 5 sec.

Sets the duration of the slide show for the JPEG images.

* How to easy change the slide show duration!

At showing the JPEG image file, Press the SYNC +/- button of the remote control.

● ● Default Setting

Resets all the settings to the default values

3 EXIT

● ● Exits the SETUP menu



Main Menu Screen

www.rap-sody.com



The figure below is RSH-300 s MAIN screen.



Icons and Screen Components

1 HDD Selection

If you select the icon of HDD Disk Selection, You can play a media file of Movie, Music and Picture.

2 USB Disk Selection

If you select the icon of USB Disk Selection, RSH-300 will search and display USB devices that are connected via a USB HOST port. You can play a media file from an external HDD, memory, etc.



Main Menu Screen

www.rap-sody.com

3 Setup

RHS-300 system setting



Movie Play

www.rap-sody.com



RSH-300 can play the following files: AVI, MPG, MPEG, DAT, VOB, TP, TRP, WMV, MP5, ISO, etc. Playback order and method are determined by a selected repeat mode.

Buttons and functions for movie playback

Remote Control Button	Function	Description
SUBTITLE	1-Click	Change the size of a subtitle (after changing the size using the UP and DOWN arrow, click on the OK button.)
	2-Click	Change the color of a subtitle (after changing the color using the UP and DOWN arrow, click on the OK button.)
	3-Click	Select multiple subtitles (When a subtitle file contains more than two languages, click the button 3 times and select a subtitle language using the UP and DOWN arrow. Then click on the OK button.)
AUDIO	Multiple Audio Selection	Selects a specific audio source when multiple audio sources exist in a movie file
INFO	File Info Display	Displays the information of a played file
BOOKMARK	Continuous Play	Support two types: stopped points and bookmarked points (up to 9 in order)
SCROLL (future function)	Position Scrolling	Scrolls the position of the screen using the arrow buttons



Remote Control Button	Function	Description
VOL	Volume Adjust	Adjusts volume
MUTE	Sound Mute	Cuts off the sound
ZOOM	1-Click	Customizes a zoom level using the arrow buttons (it will be implemented in the future)
	2-Click	Pan & Scan
	3-Click	Regardless of the aspect ratio of a file, fills up the screen
	4-Click	Sets the screen to the original aspect ratio of a file
SYNC	Subtitle Display and Timing	When a movie is not in sync with a subtitle, use this button to sync the movie and subtitle. Each click adjusts 1-second sync timing.
GOTO	Instant Jump	Jumps to a desired time position during the playback. After entering a time value using the arrow buttons or number buttons, press the [OK] button.
OK	Playing a selected file	Play a selected file
ARROW BUTTONS	Up / Down	Changing the position of a subtitle
	Left / Right	Forward or backward search of the current movie
PLAY	Start / Pause	Starts or pauses the playback
STOP	Stop	Stop the current playback
	Prev. Folder	To move to a upper-level folder on a file list
SKIP	Next / Prev. File	Jumps to a next or previous file during a playback
	Next / Prev. Page	When used on a file list screen, it jumps forward/backward to different pages.
SEARCH	Quick Search	Forward or backward search of the current movie (Each click doubles up the search speed - 2, 4, 8, 16, and 32 speeds).



JPG files can be played. RHS-300 also provides a slideshow function. The display duration for each picture can be set in the **SETUP** menu by seconds. When 0 second is given, the system keeps displaying a specific picture until the **[SKIP]** or **[STOP]** button is pressed.

Buttons and functions for photo playback

Remote Control Button	Function	Description
INFO (future function)	File Info. Display	Displays the information of a played file
ANGLE	Picture Rotation	Rotate a picture by 90 degrees in clockwise direction
OK	Playing a selected file	Play a selected file
PLAY	Start / Pause	Starts or pauses the playback
STOP	Stop	Stop the current playback
	Prev. Folder	To move to a upper-level folder on a file list
SKIP	Next / Prev. File	Jumps to a next file during a playback
	Next / Prev. Page	When used on a file list screen, it jumps forward/backward to different pages.
ARROW BUTTONS (Future Function)	Left / Right	Rotate a picture by 90 degrees in clockwise or counterclockwise direction
ZOOM	1-Click	Customizes a zoom level using the arrow buttons
	2-Click	Pan & Scan
	3-Click	Full screen
	4-Click	Original aspect ratio
SYNC	Time Setting	Sets slideshow duration



Music Play

• • • www.rap-sody.com



During playing music files, the system is in the music playback mode. In the middle of playing music files, you can search folder and files. After selecting a new file and pressing the [OK] button, the selected file will be played.

• • • Buttons and functions for music playback

Remote Control Button	Function	Description
BOOKMARK	Continuous Play	Support two types: stopped points and bookmarked points (up to 9 in order)
VOL	Volume Adjust	Adjusts volume
MUTE	Sound Mute	Cuts off the sound
OK	Playing a selected file	Play a selected file
PLAY	Start / Pause	Starts or pauses the playback
STOP	Stop	Stop the current playback
	Prev. Folder	To move to a upper-level folder on a file list
SKIP	Next / Prev. File	Stop the current playback
	Next / Prev. Page	When used on a file list screen, it jumps forward/backward to different pages.
ARROW BUTTONS	Up / Down	File navigation during a playback
	Left / Right	Jumping forward/backward by 15 seconds



Virtual DVD

www.rap-sody.com



Virtual DVD is a function that rips a DVD disk, saves the contents in the HDD, and plays the saved contents as if playing the same DVD. With this function, you can prevent any damages of original disks and can easily play movies without swapping disks.

Buttons and functions with Virtual DVD

Remote Control Button	Function	Description
SUBTITLE (Future Function)	Subtitle Selection	In case of multiple-language subtitles, it selects a specific subtitle.
AUDIO (Future Function)	Audio Language Selection	Selects a specific audio source when multiple audio sources exist in a movie file
INFO	File Info. Display	Displays the information of a played DVD
BOOKMARK (Future Function)	Continuous Play	Support two types: stopped points and bookmarked points (up to 9 in order)
VOL	Volume Adjust	Adjusts volume
MUTE	Sound Mute	Cuts off the sound
GOTO	Instant Jump	Jumps to a desired time position during the playback. After entering a time value using the arrow buttons or number buttons, press the [OK] button.
PLAY / OK	Start / Pause	Starts or pauses the playback
STOP	Stop	Stop the current playback
	Prev. Folder	To move to a upper-level folder on a file list
SKIP	Next / Prev. File	Jumps to a next file during a playback
	Next / Prev. Page	When used on a file list screen, it jumps forward/backward to different pages.
SEARCH	Quick Search	Forward or backward search of the current movie (Each click doubles up the search speed - 2, 4, 8, 16, and 32 speeds).



Firmware Upgrade

www.rap-sody.com



The upgrade version of firmware for RSH-300 is released occasionally with functional updates and bug fixes depending on the development situation by customer demands. Check your firmware version at the upper right corner of the screen.

1 Download the latest firmware file from 'Download' at www.rap-sody.com.

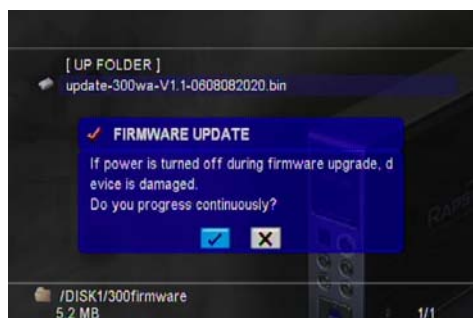
2 Connect RSH-300 to a PC using a USB cable and copy a firmware file to a desired location.

3 Connect RSH-300 to a TV and turn it on.



4 Select firmware file with selection bar using the remote controller and press the [OK] button.

5 When firmware CAUTION is displayed, select [Yes] to start upgrade.



6 Wait for firmware upgrade to be completed.



7 The following screen appears when the firmware upgrade is completed successfully.



8 The device starts automatically.

Post-upgrade firmware version can be seen at the upper right corner of the SETUP menu.

Note

If power is turned off accidentally during firmware upgrade, RSH-300 cannot operate as normal. In this case, please restore firmware using firmware rescue mode.

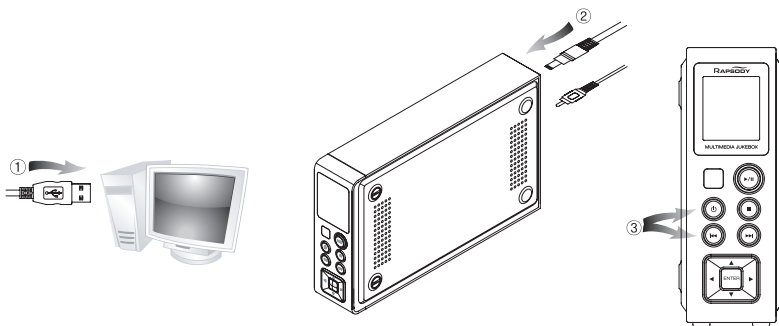


Caution

NEVER switch off or disconnect adapter during firmware upgrade.


The latest firmware file is available at <http://www.rap-sody.com>.

This may take up to 30 minutes depending on the user environment.



- When the main body is turned off during firmware upgrade, RSH-300 system get damaged and the screen turns blank. In this situation, follow the steps below to restore firmware.

See the picture above for reference.

- Connect RSH-300 to PC and copy firmware file to RSH-300. **(Even though the main firmware experienced damage, RSH-300 works as an external storage device when connected to a PC.)**
- Disconnect RSH-300 from the PC and connect it to a TV. **(Connect video signal to TV's composite terminal and connect power.)**
- Press and hold the  button on the front side of this product and turned the power on by pressing the power button on the main body.
- Firmware rescue process starts. During the process, the TV screen remains blank. **(During the process, USB LED and HDD LED on the front side of this product blink very quickly.)**
- After successful completion of firmware restoration, auto re-booting is performed and initial screen of RSH-300 is shown on TV.

Note

When "Fail" is shown in the LCD during firmware recovery.

The rescue process indicates the occurrence of error

Please check the followings

Fail[-1] : Check the connect to HDD

Fail[-2] : Not find the firmware

Fail[-3] : Flash memory problem

Fail[-4] : Flash memory problem



For more details, visit our website at <http://www.rap-sody.com>.

1 On Windows XP, a message is populated, saying "HI-SPEED USB Device Plugged into non-HISPEED USB Hub".

- This message is displayed when connected to a USB port which does not support USB2.0. In this case, transmission is made in the speed of USB1.1 Please upgrade your main board to that supporting USB 2.0 or purchase USB 2.0 host card to speed the copying of files.

2 RSH-300 is not detected in My Computer or Windows Explorer after connecting the device to PC.

- If you are using Windows 98SE, you have to install drivers. If you installed a new hard disk on your PC, please perform partitioning and formatting.

3 After connecting to a TV, the screen remains blank or shows flicker.

- When video out setting is incorrect, the screen remains blank or shows black and white picture or flicker. In this case, please push the [TV OUT] button on the remote controller slowly until video output mode screen appears.

4 When connecting to a TV, Rapsody stands still with initial screen shown.

- Make sure that the hard disk connector of RSH-300 is connected to the hard disk.
- Make sure that the hard disk was partitioned and formatted.
- For Windows XP, RSH-300 is not detected when hard disk partition is in [Dynamic Volume]. Please remove and retry

partitioning for use.

5 When playing a video, subtitles are not displayed.

- Subtitles are not displayed when the name of video file is the same as subtitle file.

6 When RSH-300 is not detected by a PC.

- Please make sure that RSH-300's hard disk is formatted.
- For a hard disk consuming a lot of power, connect an adapter to RSH-300.
- Connection may fail when the USB port on the front side of a PC is used.