



www.bull-it.ch

RAPSODY

RSH-250

2.5" HDD BASED MULTIMEDIA PLAYER

ADDITIONAL INFORMATION

(check the included RSH-100 user's guide for more information)



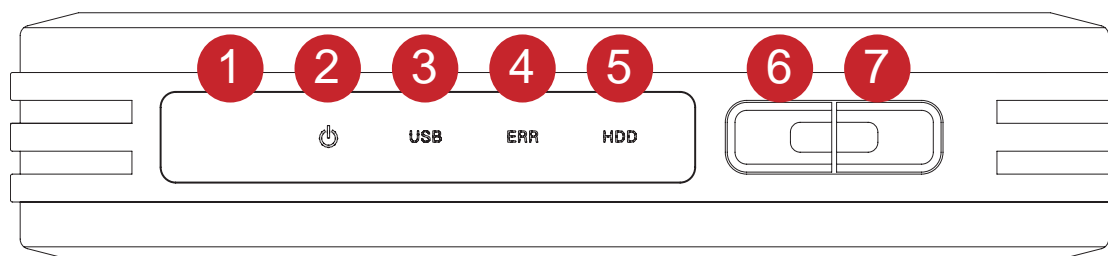


Package Contents and Access Panels

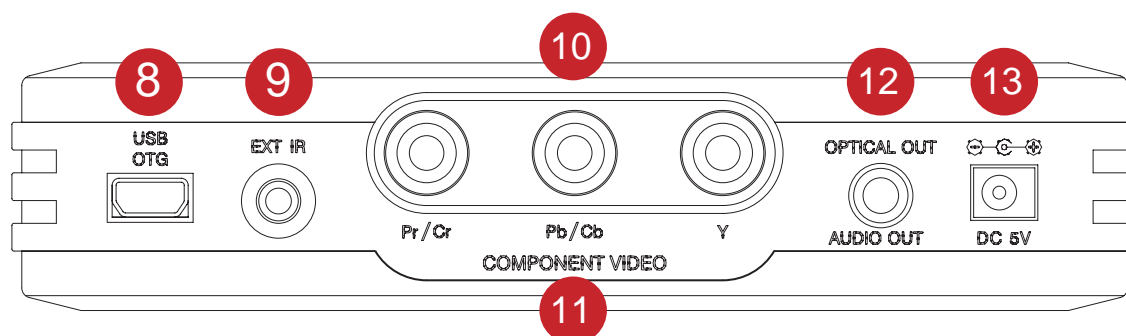
Package Contents



Front Panel



Rear Panel





Access Panel Description

1. **Remote Controller Sensor**
Detects the signal of remote controller. When using the remote controller, point it towards this sensor and get rid of objects blocking this sensor.
2. **Power Indicator**
Illuminated when RSH-250 is turned on.
3. **USB Indicator**
Illuminated when RSH-250 is connected to PC or OTG device through USB.
4. **Error Indicator**
Indicates error experienced while using OTG function.
5. **HDD Status Indicator**
Blinks while HDD is in operation.
6. **Copy Button**
Used to backup various memories using OTG function.
7. **Power Button**
Used to turn on/off the power.

- When RSH-250 is connected to a PC using USB cable, power is automatically turned on. If this button is pushed in this situation, the power is turned off.
8. **USB O.T.G. Port (On The Go)**
USB 2.0 port used to connect with PC. Also used for data backup without PC by connecting to USB memory card reader, USB memory or digital camera using OTG conversion cable supplied in this package.
9. **External Remote Controller Receiver Connector**
Used to connect external remote controller receiver supplied in options for vehicle.
10. **Composite Video Terminal (CVBS)**
Blue(Pb/Cb) terminal is used by RSH-250 as composite video terminal. When TV output is set to NTSC, composite video cable is plugged here.
11. **Component Video Terminal**
These three terminals in red, blue and green are used to connect to component video. When connecting to component, TV output should be set to the supported mode.

Caution:
In 480p and 720p, TV output is in progressive scan mode. This setting reduces screen flicker. Before connecting to TV in progressive mode, please make sure that your TV supports progressive mode.
12. **Audio Output Terminal**
Used to output audio signals. Also used to output analog audio signals using Stereo to RCA cable supplied in this package or to output 5.1 channel sounds by connecting to home theater amp or receiver with round connector-shaped optical cable.
13. **Power Input Terminal**
Used to connect 5V Adapter for home supplied in this package or adapter for vehicle supplied with vehicle option here. Also used for portable OTG backup function by connecting battery pack here.

Caution:

Hard disk that can be mounted is 2.5" IDE hard disk for laptops.

No jumper setting is required for 2.5" hard disk.

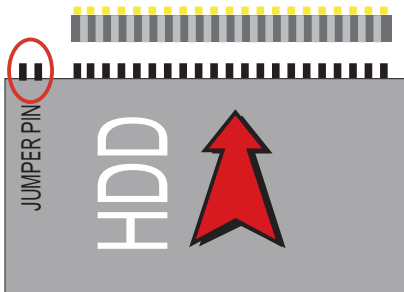
Four pins positioned on the left side of the rear are used for jumper setting. Please make certain that all jumpers are removed from here. (Hard disk with no jumper here is a master.)

1. Unscrew both sides of the main body cover using the driver supplied in this package.

2. See the following picture for main body with cover detached. Hard disk connector is indicated in a red ellipsoid in the picture below..



3. As shown below, tilt hard disk by 15 degrees and push it forcefully into place. Hard disk pins have to fit into the main body.



Caution:

When loading hard disk, be careful that static electricity is not generated around the circuit. Static electricity causes fatal damage to the circuit.

4. Then, tighten the hard disk screw on two parts of the hard disk marked in blue circles below(On the rear).



5. See the picture below for hard disk loaded properly.



6. Put the cover and tighten the cover screws supplied in the package on eight parts as shown below in blue circles(Four parts per side).

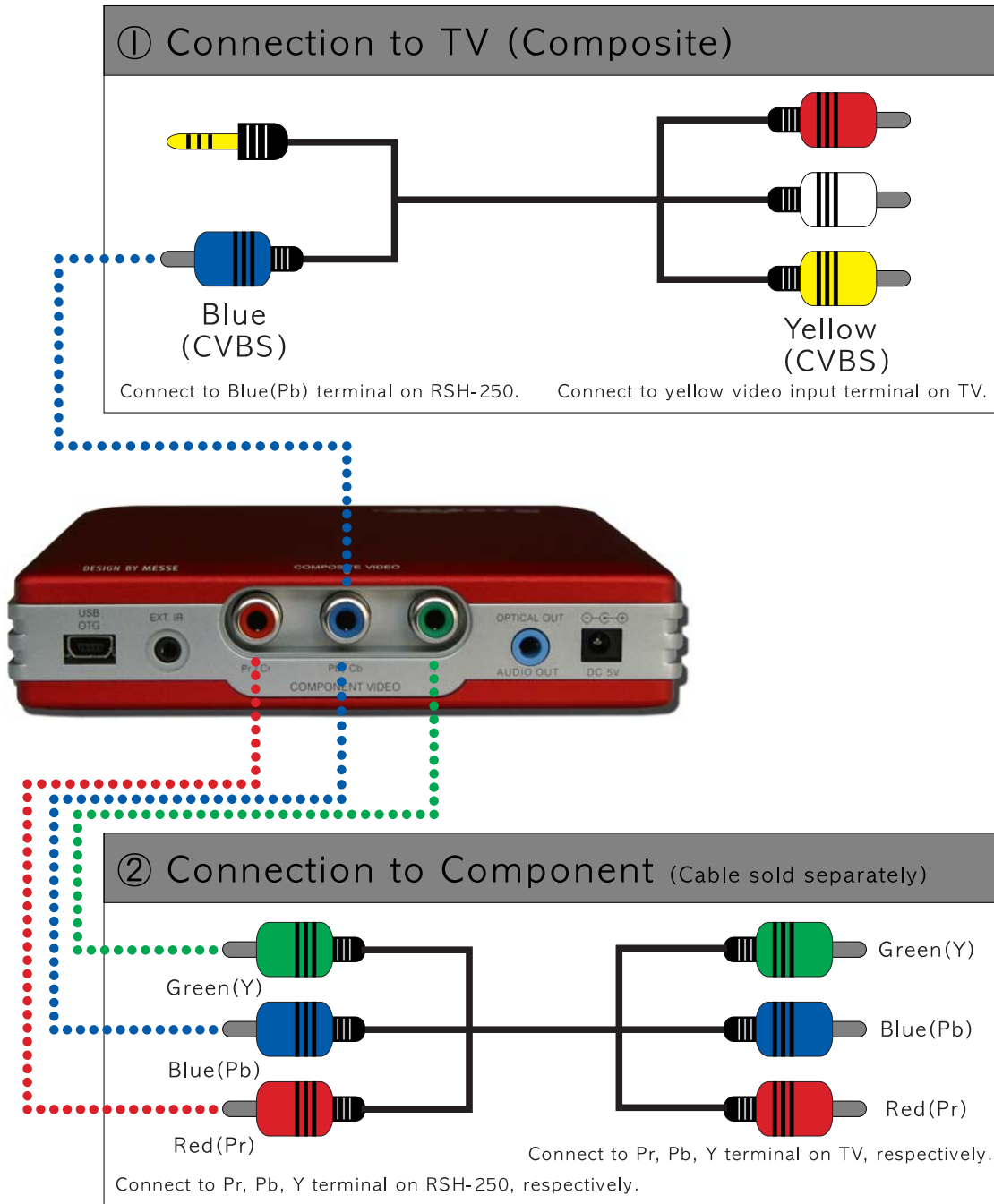


Note:

For hard disk requiring much power supply, PC cannot often recognize it when it has USB power supply only. In this case, connect separate adapter for home to RSH-250 to supply power.

Note:

If you connect this product to video output with USB cable connected, your screen will remain blank. Please connect video cable based on video output as bellow:



If your TV screen remains blank after cable connection, please take the following steps.

1. Turn on the TV and convert its mode to external input mode(video mode) to fit into the video output method connected. (See TV User Guide for details.)
2. If RSH-250 initial screen remains blank or shows flicker, push [TV OUT] button on RSH-250 remote controller repeatedly until normal screen is shown. RSH-250 video output mode changes upon pushing the [TV OUT] button.
3. When the screen is shown normally, adjust video output from RSH-250 SETUP menu to fit into the corresponding output mode.

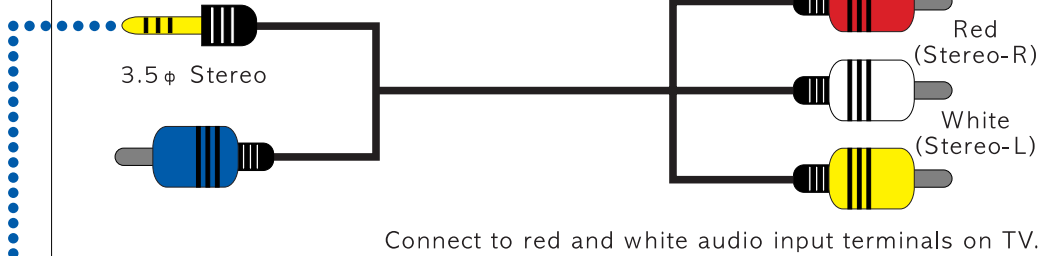


Connecting Audio Cable

Note:
If you connect this product to video output with USB cable connected, you cannot hear sounds. Please connect cables based on the two audio outputs as below:

① Connection to TV (Stereo)

Connect to RSH-250's sky-blue terminal.



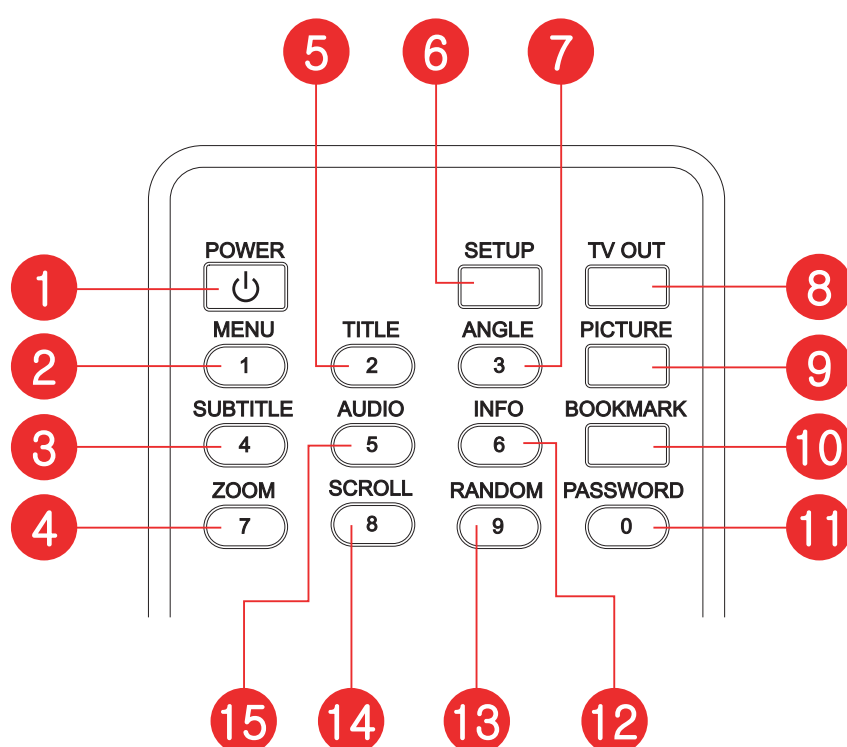
② Connection to Optical Cable (Cable sold separately)



If you cannot hear sounds after optical cable connection, please check as follows:

Please change audio output mode to digital in SETUP menu.

Upper Part (Function Part)





Remote Control

1. **Power**
Switches on and off
2. **MENU**
Accesses menu on a DVD disk
3. **SUBTITLE**
Modifies subtitle settings

-Push once to change the size of subtitle

Make changes using up and down arrow keys

-Push twice to elect integrated subtitle.

If the subtitle file provides two or more languages, push this button twice or more to select to display subtitle in other language.
4. **ZOOM**
Enlarges or reduces DVD video images

-Push once to adjust zoom percentage and press OK.

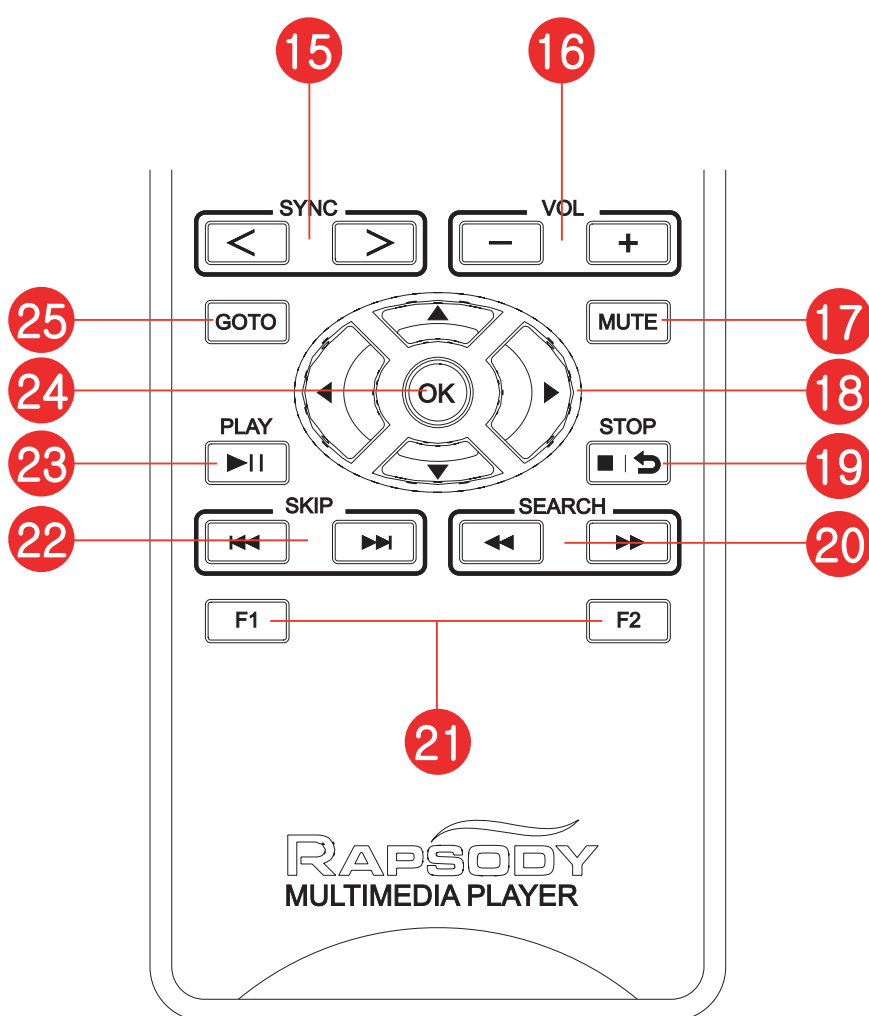
-Push twice to convert to full screen mode.

-Push three times to perform pan-and-scan.

-Push four times to turn off the zoom function.
5. **TITLE**
Displays title menu when playing a DVD.
6. **SETUP**
You can return to RSH-500 environment setting menu by pushing this button while DVD playback is stopped.
7. **ANGLE**
Modifies camera angle during playback of a DVD(only for multi-angle titles).
8. **TV OUT**
Modifies TV output supported by RSH-250 sequentially. If your TV screen fails to show images, please push this button slowly. As there are seven TV output modes, you will get images by pressing the button less than eight times.
9. **PICTURE**
Adjusts contrast, brightness and color of DVD images. You can display these options sequentially by pushing the button repeatedly and make selections using left/right arrow keys.
10. **BOOKMARK**
Searches the end point of playback of a file that was stopped playing previously and then continues to play from that point.
11. **PASSWORD**
Assigns a password to folder. You can cancel the password by typing 0000 in the new password entry.
12. **INFO**
Displays information of the file being played on screen.

Note:
First, you need to open the folder you want to assign a password to. You cannot assign a password to the selected folder using a selection bar. If you enter disk1 and assign a password during initial drive selection, it is assigned to disk1 drive.
13. **RANDOM**
Uses random playback function when playing audio files.
14. **SCROLL**
Moves the location of screen by arrow keys. Please push the OK button after location moving is completed.
15. **AUDIO**
Selects an audio language for video which includes two or more audio languages.

Lower Part (Playback Part)





Remote Control

15. **SYNC**
Used to adjust subtitle synchronization timing when while playing a video. You can adjust the synchronization timing by 1 second upon pushing this button.
16. **VOL**
Controls volume.
17. **MUTE**
Temporarily silence the audio.
18. **Arrow Keys**
Selects an option in the menu.

Also performs the following functions when playing a video.
 - Up/Down keys

Moves the position of subtitle.
 - Right/Left keys

Video: Skip by 30 seconds
Music: Skip by 5 seconds
Image: Rotate images
19. **STOP/RETURN**
Stops playing video, music or images.
If this is pushed on the main screen, you will return to the upper level folder.
20. **SEARCH**
Searches the video file forward or backward with quick. Search speed is increased or decreased 2, 4, 16, or 32 times upon pushing this button.
21. **F1/F2**
Reserved function buttons for adding functions in future.
22. **SKIP**
Skip to next chapter or track during playback. When used on main screen, file list is skipped by page.
23. **Play/Pause**
Start or pause playback of video, music or images.

Note:
All files in a folder are played sequentially. If the folder has a sub-folder in it, files in the sub-folder are also played repeatedly without limit before being stopped playing.

For images, use the play button for slide show.
24. **OK**
Used to select menu option or to play video, music or images.

Note:
When the OK button is used, files in a folder are played and then are stopped playing. Also, if there is a problem with images or synchronization between image and audio during playback, just press this button then the video refreshes and the problem is fixed.
25. **GOTO**
Skips to the point of time you want to view from current time during playback. Type the point of time using arrow keys or numerical buttons and push the OK button to proceed.



Using O.T.G. Function

Before using USB O.T.G:

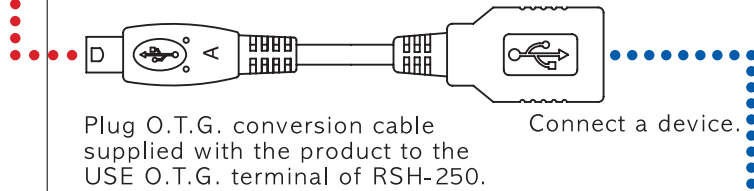
In order to use the USB O.T.G., first partition of the hard disk loaded in RSH-250 should be formatted with FAT32.

For USB devices require much power consumption, there is a need to connect extra power supply. All USB devices are not available for O.T.G. backup.

Connecting O.T.G. Cable



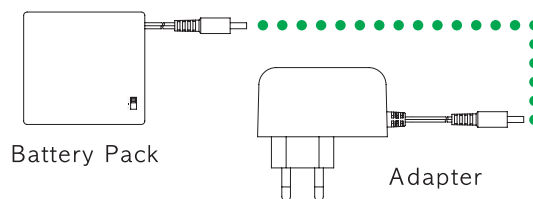
1. Connect O.T.G. Cable



Devices Available for O.T.G

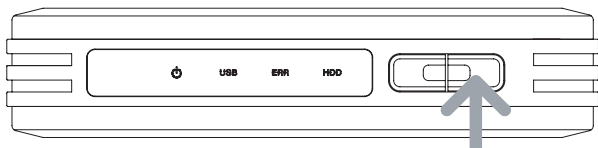
- Digital Camera
- USB memory sticks
- Memory card readers
- MP3 player

2. Connect Power Supply

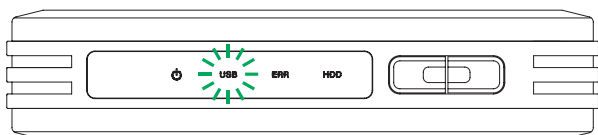


O.T.G. Backup

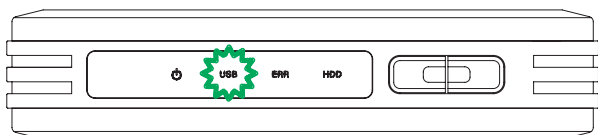
1. Press the [POWER] button on the front side of the product to turn the power on.



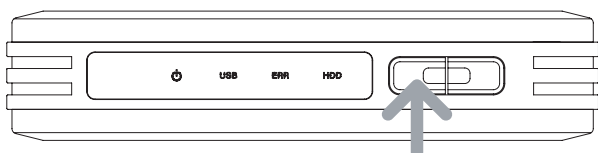
2. USB LED blinks while hard disk is being initialized.



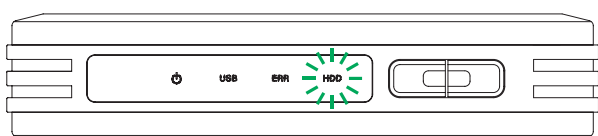
3. When O.T.G. backup is ready, USB LED stops blinking and remains ON.



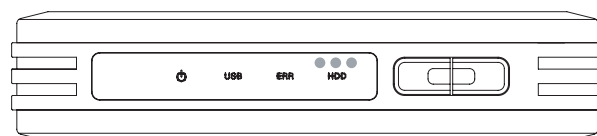
4. Push the [COPY] button to execute O.T.G. backup.



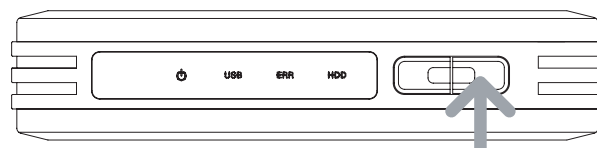
5. HDD LED blinks while backup is in progress.



6. HDD LED stops blinking when backup is completed.



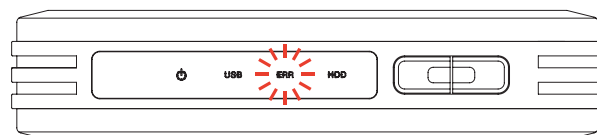
7. Push the [POWER] button to turn the power OFF.



The first backup file is saved to DSC00000 folder in the root folder of the first partition. If there is an existing folder with the same name, a new folder is created with name containing sequentially increased number.



When error occurs during backup, ERR LED blinks.

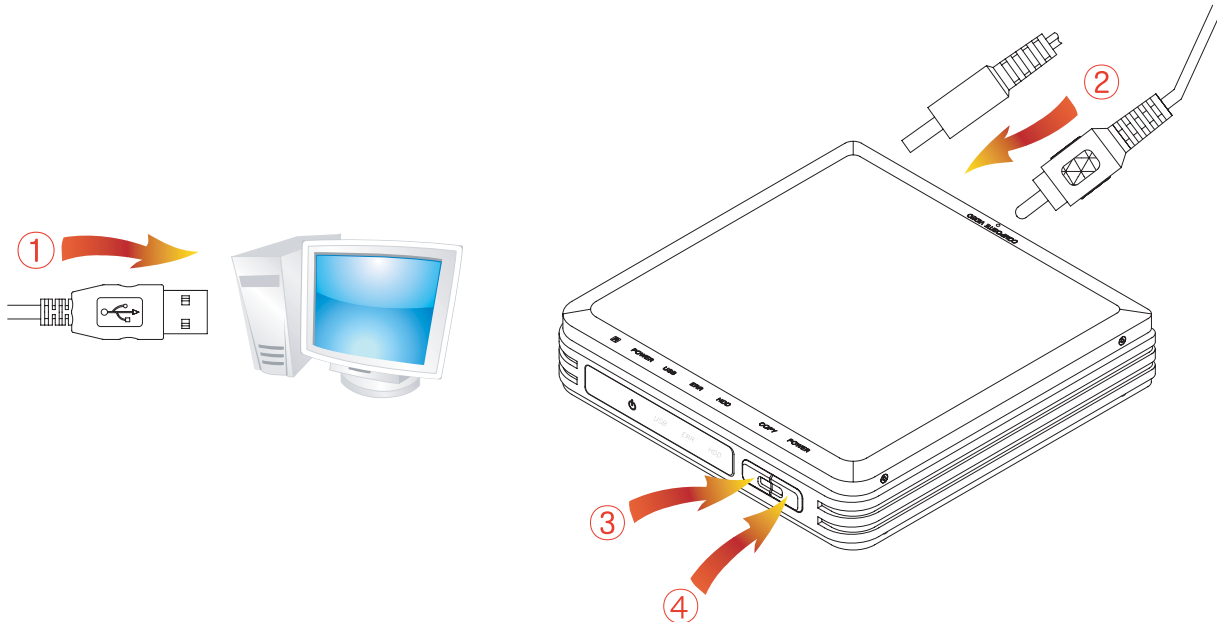


O.T.G. backup error occurs when:

1. The USB device connected does not support UMS (Universal Mass Storage) standard.
2. Power supply with USB O.T.G. is not enough.
3. The USB cable is too long.

Caution:

NEVER switch off or disconnect adapter during firmware upgrade.
The latest firmware file is available at <http://www.bull-it.ch>.
This may take up to 30 minutes depending on the user environment.



When the main body is turned off during firmware upgrade, RSH-250 system get damaged and the screen turns blank. In this situation, follow the steps below to restore firmware.

See the picture above for reference.

1. Connect RSH-250 to PC and copy firmware file to RSH-250.
(Even though the main firmware experienced damage, RSH-250 works as an external storage device when connected to a PC.)
2. Disconnect RSH-250 from the PC and connect it to a TV.
(Connect video signal to TVs composite terminal and connect power.)
3. Press and hold the [COPY] button on the front side of this product and turned the power on by pressing the power button on the main body.
4. Firmware rescue process starts. During the process, the TV screen remains blank.
(During the process, USB LED and HDD LED on the front side of this product blink very quickly.)
5. After successful completion of firmware restoration, auto re-booting is performed and initial screen of RSH-250 is shown on TV.

*Blinking of USB LED for more than five minutes after HDD LED is OFF during the rescue process indicates the occurrence of error. Please check the followings.

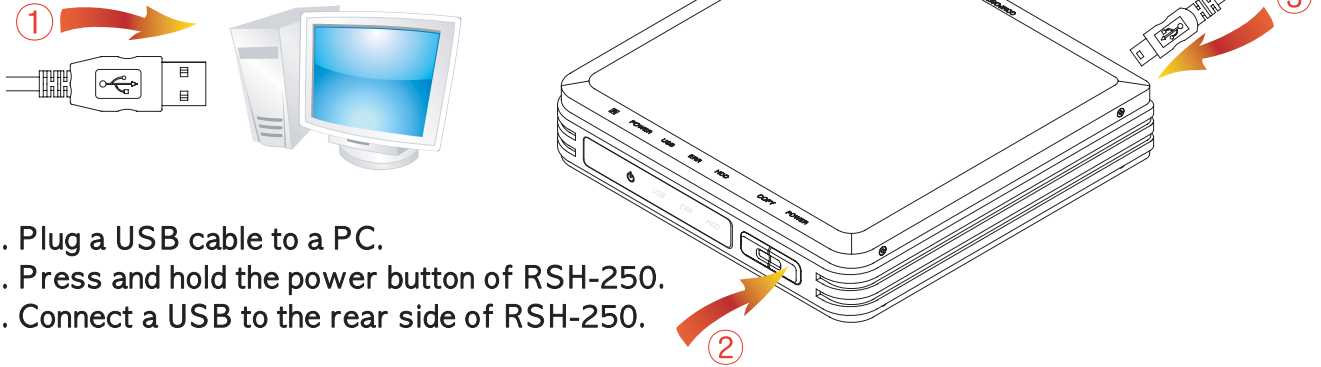
- Is there any firmware file copied in the hard disk?
- Did you perform [remove hardware safely] before disconnecting USB cable from RSH-250 after copying firmware file.

Caution:

NEVER switch off RSH-250 or disconnect USB cable during O.T.G. firmware upgrade, which may result in fatal damage to the product.

Download firmware files on <http://www.bull-it.ch>.

Connecting O.T.G. Firmware Upgrade Mode

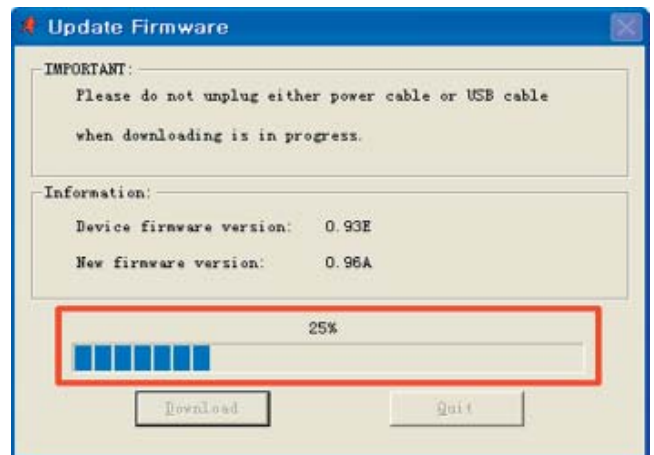


1. Plug a USB cable to a PC.
2. Press and hold the power button of RSH-250.
3. Connect a USB to the rear side of RSH-250.

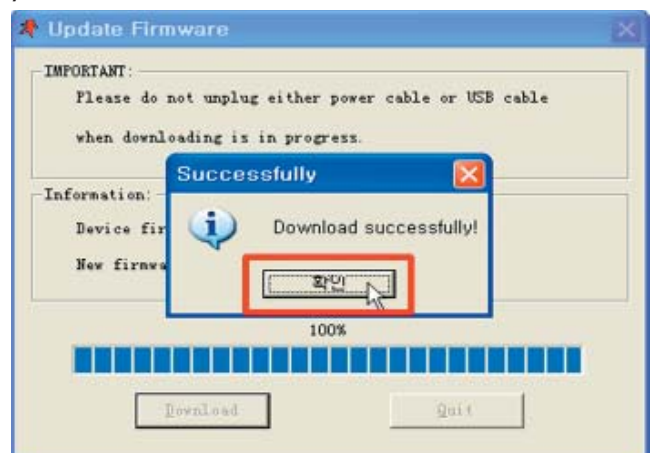
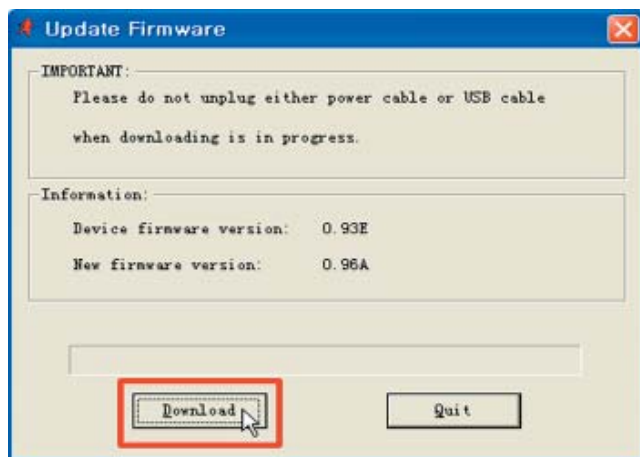
4. Decompose downloaded O.T.G. firmware file and execute [Enduser.exe].
6. Wait for firmware upgrade to be completed. NEVER turn off the power or disconnect USB cable.



5. Push the [Download] button to start upgrade.



7. The following screen appears when the firmware upgrade is completed successfully. Then, RSH-250 starts automatically and detected as a portable storage device by PC.



8. Click [OK] and then [Quit] to exit the upgrade program.



Troubleshooting

For more details, visit our website at <http://www.bull-it.ch>.

1. On Windows XP, a message is populated, saying HI-SPEED USB Device Plugged into non-HISPEED USB Hub.

* This message is displayed when connected to a USB port which does not support USB2.0. In this case, transmission is made in the speed of USB1.1. Please upgrade your main board to that supporting USB 2.0 or purchase USB 2.0 host card to speed the copying of files.

2. RSH-250 is not detected in My Computer or Windows Explorer after connecting the device to PC.

* If you are using Windows 98SE, you have to install drivers. If you installed a new hard disk on your PC, please perform partitioning and formatting.

3. After connecting to a TV, the screen remains blank or shows flicker.

* When video out setting is incorrect, the screen remains blank or shows black and white picture or flicker. In this case, please push the [TV OUT] button on the remote controller slowly until video output mode screen appears.

4. When connecting to a TV, Rapsody stands still with initial screen shown.

* Make sure that the hard disk connector of RSH-250 is connected to the hard disk.

* Make sure that the hard disk was partitioned and formatted.

* For Windows XP, RSH-250 is not detected when hard disk partition is in [Dynamic Volume]. Please remove and retry partitioning for use.

5. When playing a video, subtitles are not displayed.

* Subtitles are not displayed when the name of video file is the same as subtitle file.

* If the voice codec is in DTS, extra receiver providing DTS decoding is required. In this case, please connect to an extra receiver using optical cable or purchase RSH-250D. As RSH-250D allows DTS 2-channel down-mix, DTS audio signals are converted to 2-channel analog stereo.

7. When O.T.G. backup fails for a USB device.

* In order to use the O.T.G. function, first partition of the hard disk loaded in RSH-250 should be formatted with FAT32.

* O.T.G. backup is not allowed for devices that does not support UMS(Universal Mass Storage) standard.

* Some digital cameras, though they support UMS standard, are not supported. In this case, please use extra memory card reader for backup.

* Devices requiring much power consumption may not be supported due to power limitation of O.T.G. USB socket.

8. When RSH-250 is not detected by a PC.

* Please make sure that RSH-250 hard disk is formatted.

* For a hard disk consuming a lot of power, connect an adapter to RSH-250.

* Connection may fail when the USB port on the front side of a PC is used.