

USER MANUAL

RAPSODY N36



Date: 10 March 2008

www.rapsody.ch

Table of contents

1. Information.....	4
1.1. Introduction	4
1.2. Brief description of the functions.....	4
1.3. Scope of delivery.....	4
1.4. Replacement parts/accessories	4
2. Installation.....	5
2.1. Installing a hard disk	5
2.2. The remote control unit	5
2.3. The Rapsody N36 connections.....	6
2.4. The power supply unit.....	6
2.5. Audio outputs	6
2.6. Video outputs	6
2.7. LAN connection.....	7
2.8. USB host	7
2.9. PAL/NTSC switch.....	7
2.10. Protective film.....	7
2.11. Cleaning	7
3. Set up	8
3.1. Transmit picture to output device.....	8
3.2. Set up.....	8
3.3. Network settings for the device.....	12
3.4. Connect PC with Rapsody N36	14
3.5. Carry out a firmware update.....	17
4. Operating the device	18
4.1. Navigation/Main menu	18
4.2. Play back multi media files.....	21
4.3. The remote control unit and its functions.....	23
4.3. The remote control unit and its functions.....	23
4.4. Touch Panel Front.....	26
4.5. Bookmarks	26
4.6. Subtitles.....	26
5. Solving problems	27
5.1. Frequently asked questions	27
5.2. Further information.....	27
5.3. Service/Repair.....	27
Technical details of the Rapsody N36	28
Imprint	29

1. Information

1.1. Introduction



Congratulation on your purchase of a Rapsody N36. This user manual gives you a quick overview about connecting, installing and using your Rapsody N36. If you are not satisfied with a section of the user manual or if particular questions arise that are not answered here, please contact our support division at the Rapsody-Homepage (<http://www.rapsody.ch>).

Please read this user manual carefully prior to using your device!

1.2. Brief description of the functions

With the N36 you can play back multi media content stored on the internal hard disk, on a network, or on a connected USB device simply and easily, without using a PC.

Apart from televisions or stereos, you can use also use practically any multi media device such as beamers or plasma screens as the output medium. The possibilities are unlimited.

Thanks to a high-grade design with a touch panel front, the Rapsody N36 also enhances the appearance of your home cinema system.

You can access the internal hard disk via the network connection and the NDAS technology.

Easy-to-apply firmware updates increase the variety of functions, offered by your Rapsody N36, even further. This lets you keep up to date with the latest technologies.

1.3. Scope of delivery

Along with the HDD player itself, your N36 comes with a power supply unit, a cinch AV cable, a DVI/HDMI cable as well as a network cable, the remote control together with batteries, the CD containing the NDAS software and a printed quick guide.

1.4. Replacement parts/accessories

If you should need replacement parts or accessories for your Rapsody, you can find out about suppliers at the Rapsody-Homepage (<http://www.rapsody.ch>).



2. Installation

2.1. Installing a hard disk

You can install any 3.5" SATA and PATA disk in your Rapsody HDD Player. To connect a PATA HDD just remove the SATA adapter board. There is no restriction to the storage capacity. The hard disk may be partitioned and formatted prior to installing; this is, however, not essential. It goes without saying that your guarantee is not affected by a correctly carried out installation; the devices are intended for this purpose.

Installation

Open the device by first unscrewing the two screws on the sides and three screws on the rear. You can now slide the cover to the rear and remove it.



N36 with SATA adapter

Connect the power supply as well as the data cable to the hard disk (PATA: which has to be jumpered as master) and place it in the corresponding frame in the housing. Make sure that the connecting cables do not get caught underneath the hard disk.



PATA:



SATA:

Now screw 4 screws through the holes in the sides into the corresponding threads on the hard disk and tighten by hand. One of the threads is rather difficult to reach; for this reason you can just use three screws to make fixing easier.



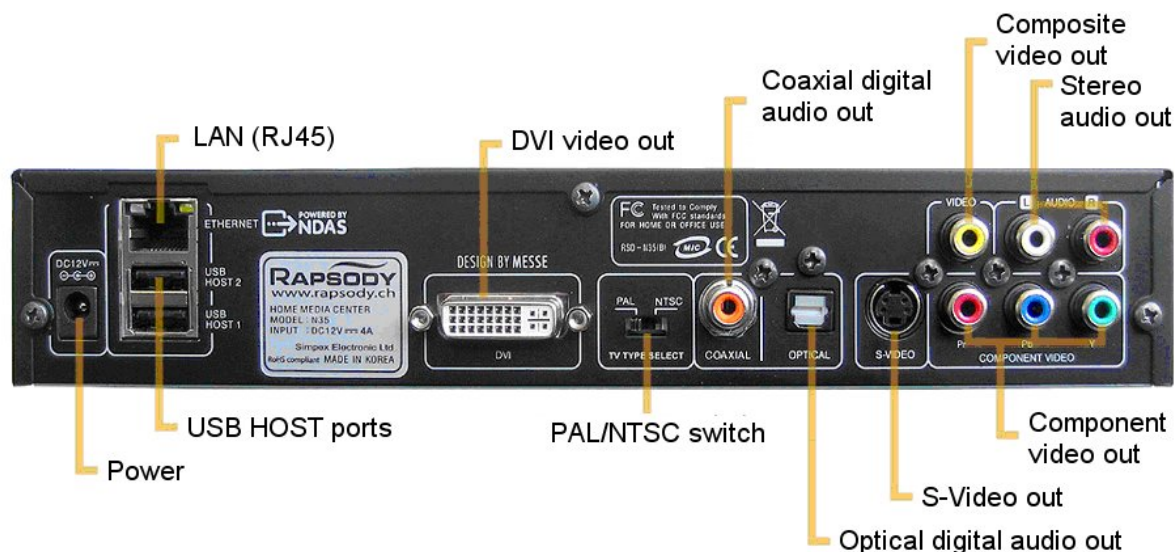
Replace the cover and the installation of the hard disk is completed.

See **item 3.4 "Connect PC with Rapsody N36 "** for further information.

2.2. The remote control unit

The accompanying remote control unit makes using your Rapsody child's play. Using the remote control in the dark is simplified by its fluorescent keys that glow for a while in the dark. The acknowledge LED on the front blinks when you send a signal. If the remote control stops functioning, or if the LEDs do not blink, the batteries in the remote control are probably dead. They should only be replaced with two leak-proof common micro batteries (AAA).

2.3. The Rapsody N36 connections



2.4. The power supply unit

The energy saving switched-mode power supply has a wide range input of 100-240V and can be used, with appropriate adapters, in many countries throughout the world. It has a 12 volt output and can supply a maximum current of 5 amps. This is necessary, as many modern high-speed hard disks require a high starting current. Only use original Rapsody power supply units with your HDD player! Undersized power supply units can not only damage the devices but may also become overloaded and, in the worst case, can cause a fire!

Safety information:

Important! The provided power supply unit is only approved for use with the Rapsody N36! Do not use it for other electric appliances!

2.5. Audio outputs

Stereo cinch (red/white)

A normal stereo audio signal is output here for connecting to any end devices as you wish. Multi media contents with multi-channel tone will be reduced to stereo output.

Optical AC3 output

Your Rapsody has a TOSLINK jack, suitable for a fibre optic cable for digitally transmitting multi-channel audio signals. You can connect this to a device with an input that can handle AC3 audio signals (DolbyDigital or DTS).

Coaxial AC3 output (orange)

AC3 multi-channel audio signals can also be output via the coaxial connection. You can connect it with a cinch cable to an appropriate output device. This way of connecting does not usually cause any loss of sound quality when compared with an optical connection. Most cinch cables are suitable, a special digital cable is not usually necessary.

2.6. Video outputs

Your Rapsody N36 has several video outputs that can be selected by switching with the remote control unit (TV OUT key).

Composite video (yellow)

This is a common video output, which you can connect directly to an output device with composite input, using the provided cable. Your Rapsody specialist shop has favourably priced scart adapters with which you can transmit the composite signal together with the stereo audio

signal directly onto a scart plug. This enables you to connect your Rapsody to any television set with a scart input.

The composite output can produce either a PAL or a NTSC signal.

S-Video (Mini DIN jack)

Standard S-Video signals are output here. The picture quality is usually better than with output via composite video.

Component video (red/green/blue)

The component output enables the output of high resolution HDTV video signals. These are YPbPr or YCbCr colour coded and are transmitted to the output device via 3 cinch cables. Possible resolutions are 480p, 720p, 1080i and 1080p, up to a maximum of 1920x1080 and are specified in the N36 setup.

DVI output (HDMI)

The Rapsody N36 has a 24+5 pin DVI jack. This means that practically all DVI plugs will fit. The DVI output provides TOP picture quality and is recommended to be used if corresponding high resolution output devices are available. Possible resolutions are 480p, 720p, 1080i and 1080p, up to a maximum of 1920x1080 or 1600x1200 and are specified in the setup of the N36. A DVI to HDMI cable for connecting to a modern TV is provided.

2.7. LAN connection

This is a RJ-45 10/100 LAN jack. Please read section 3.3 "Network settings for the device" for information about connecting and installing.

2.8. USB host

You can connect further USB devices such as external hard disks, memory card readers, USB sticks or digital cameras to the USB host sockets. This enables you to play multi media files directly from this device via the menu item "USB".

Please observe that this will only work with devices that can log on to a windows operating system as USB mass storage devices, in other words, after connecting, they are available as a separate drive without the need for installing a driver.

2.9. PAL/NTSC switch

With this switch you can choose the transmission standard for the display. This depends on the output devices that are connected. PAL should work in the most cases in Europe.

2.10. Protective film

There is a wafer-thin protective film on the front of your N36. Many customers forget to remove the film and, after a short time, are annoyed about apparent scratches on the display, although the scratches are only on the film. After removing the protective film, your Rapsody's touch panel appears in a perfect, lasting, new look.

2.11. Cleaning

Please do not clean the device with strong cleaners or even water! A lint-free and non-scratching cloth, at the most slightly moist, with a little glass cleaner removes greasy marks reliably.

3. Set up

3.1. Transmit picture to output device

Make sure that your connected TV, beamer or other display appliance is ready to receive. Switch your television accordingly to the respective AV input channel to which the Rapsody is connected.



When you start your Rapsody N36 for the first time, it may send a signal from the wrong video output channel or it may be necessary to switch over, on the rear, from PAL to NTSC.

Switch the device on and wait 10 seconds until it is ready.

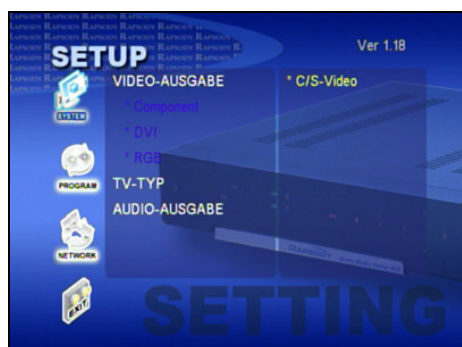
Now simply press the TV-Out key (lower right) on your remote control and wait a moment each time you press a key to see if a picture is displayed. Depending on the receiver, it may take a moment until a picture is displayed. The output mode that is currently active (e.g. DVI) is displayed on the touch panel front.

If the cable is connected correctly and if the output device is ready to receive, you should have a picture after switching 5 times, at the most.

You can now proceed to set up the video output.

3.2. Set up

Start the Rapsody. There is a menu item "Setup" in the main menu. You can reach this menu item either directly with the setup key on your remote control or with the right and left arrow keys and the OK key. In the setup menu, you also navigate with the arrow keys.



Simply press the setup key when you want to leave the setup menu. Your changes will now be saved.

System video output (Video-Ausgabe)

The Rapsody N36 has 4 different modes for outputting the video signal.



C/S-Video: The signal is outputted simultaneously to the composite and the s-video jacks.

Component: The signal is outputted to the component jacks.

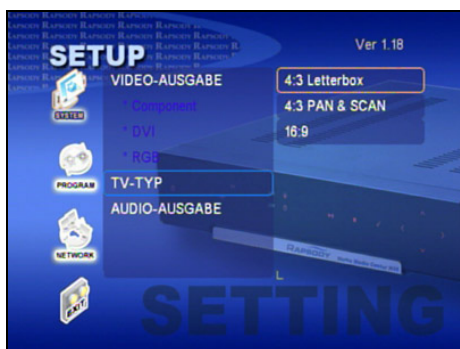
DVI: The DVI output is activated (conforming to HDMI).

RGB: An RGB signal is sent to the component output.

A further menu item is activated, depending on the mode selected (not with C/S video) in which you can select the output resolution.

System TV-type (TV-Typ)

Here you can specify the picture format of the connected output medium. Normal televisions and most beamers have a format of 4:3, while wide screens have 16:9.



In 4:3 Letterbox mode, video material is scaled on the screen in such a way as to fill its entire width. This results, for example, in black bands at the top and the bottom with 16:9 films.

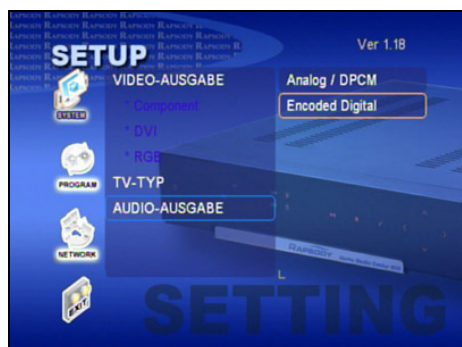
In 4:3 Pan & Scan mode, the material is scaled to take up the full height of the screen. This means, under circumstances, that picture information on the right and the left is cut off.

System audio output (Audio-Ausgabe)

The Rapsody N36 can send multi channel audio signals such as DolbyDigital or DTS, either as a 2 channel downmix, or directly as a multi channel AC3 stream, to its optical or coaxial output jack.

In analogue/DPCM mode, a 2-channel stereo audio signal is sent to the analogue and digital output jacks.

In Encoded Digital mode, analogue output is turned off and only the digital signal is outputted, unchanged, to the digital outputs for multi channel audio tracks.



Program - subtitles (Untertitel)

Here you can change the size and the colour of the subtitles that are displayed.



Program - slideshow interval (Diashow-Pausendauer)

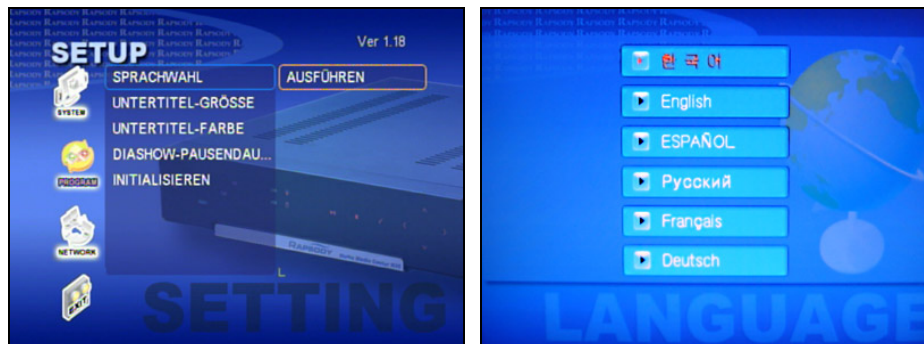
You can specify the length in seconds of the interval when automatically changing pictures during a slideshow. Enter a 0 here if you don't want to skip pictures automatically.



Program - language selection (Sprachauswahl)

You can choose here from the following languages:

German, English, French, Russian, Spanish, Czech and Korean.



If you should have accidentally selected Korean, then you will probably have difficulty in selecting the corresponding menu item again. Follow the following steps and the player will be positioned at the language selection menu item.

Press SETUP on the remote control (above right), the player will now change to the setup menu. Now press the arrow down key once, the arrow right key twice and the OK key. The language selection should now appear.

Program - Initialise (Initialisieren)

By selecting this item you will set your HDD player back to the factory settings. You should always do this after a Firmware update.



Network – IP settings (IP Einstellungen)

You can include your Rapsody N36 in your network here and either assign an IP automatically (recommended) or manually. You will find further information about network recognition in the following section 3.3 – Network settings for the device.



3.3. Network settings for the device

In order to connect your Rapsody with the network, it must be correctly included in the network (LAN). To do this, connect the N36 with the provided patch cable to a network hub/switch or router, for example that is connected to your PC. It is not possible to connect directly with a PC using this cable! You need a crossover cable if you want to do this.



These instructions can not, unfortunately, cover networks and their topologies; this is partly a very complex topic. Each network is set up and configured differently.

In order for the data transmission between PC and N36 to work, it must, for example, be ensured that any firewalls that are present do not block the data traffic. These may have to be reconfigured, under circumstances.

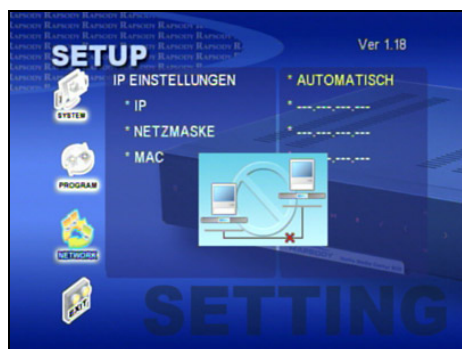
The following describes the case where a PC and N36 are included in a common network, and data transmission for both devices is not restricted.

Automatic IP setup

Each device in your network requires an IP. This is a unique number with which a device can be addressed. With your N36, the IP is specified in Setup under "Network".



If the network includes a DHCP router it can automatically assign an IP to the Rapsody. First select "automatic" ("automatisch") from IP settings (IP Einstellungen). A search process will be started. If the following image appears during this process this indicates that an IP could not be assigned to the N36. In this case the IP must be entered manually.



Entering the IP manually

If automatic assignment was not possible, you must enter an IP and a netmask manually. To do this you must first find out the network IP address of the PC to be connected. If you use the operating system Windows 2000 or XP, you can display the properties of the network connection used with the item "network connections" in the "settings" control panel. You will find the IP address among the properties for the TCP/IP protocol used.

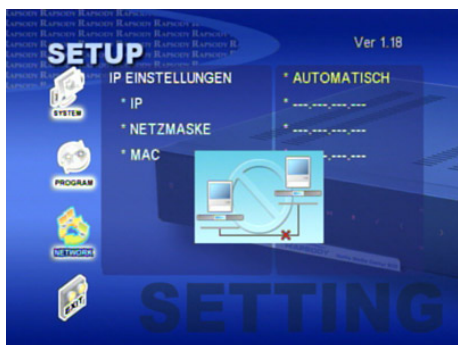
If you use another operating system or if you can't find what you are looking for, please consult the documentation for your operating system to find out your PC's IP address.

Assume that the PC has the IP-Address 192.168.0.1. In this case you must enter an IP where the first three parts are identical to this but the last part is different! The last number may not

exceed 255. Thus, a possible IP for the N36 would be 192.168.0.33 or 192.168.0.47. Please make sure that no other network devices are used that have the same IP-Address! Please ask your network administrator about which IP you may use if there are other PCs or network devices such as printers in the network and you are unsure about this.

After entering the IP you must enter a netmask (subnet mask). The preset value 255.255.255.0 is usually the right one.

After confirming the entry the "no connection" symbol should no longer appear otherwise the IP address is not correct or the network is interrupted somewhere.



After successfully entering the IP it is shown in Setup under the details "manual" ("manuell").



Congratulations, the Rapsody is now correctly integrated in the network! You should now have access to any existing shared network resources (see item 4.1 "Sharing a PC").

3.4. Connect PC with Rapsody N36

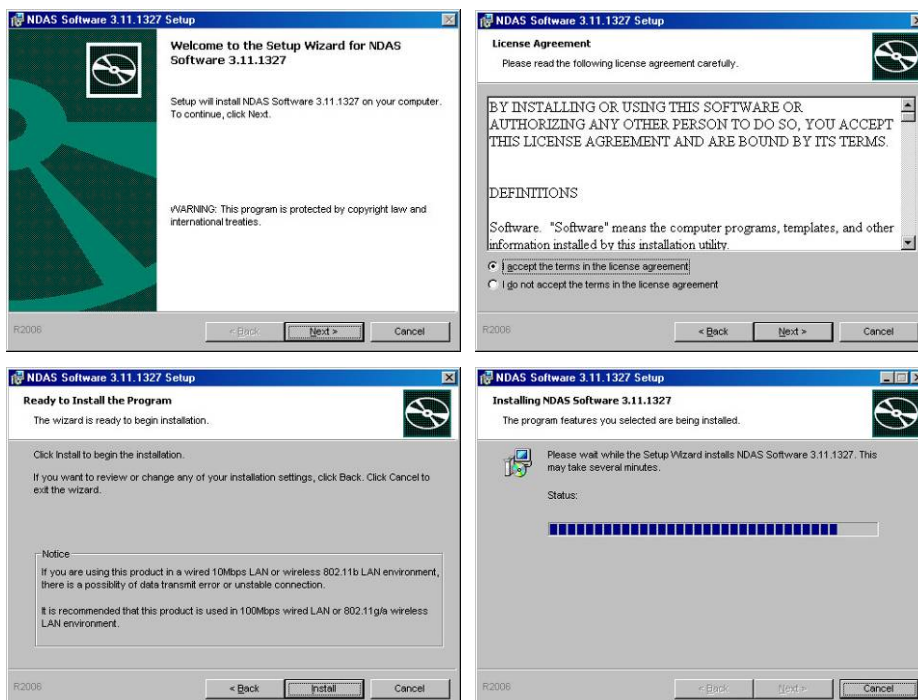
PC NDAS software must be installed in order to access the Rapsody's internal hard disk from a network. This serves to authorise the access to the hard disk by entering a NDAS key. Also NDAS allows much greater transfer speed (hardware acceleration through built-in chip).

Install NDAS software

After inserting the accompanying CD under Windows, the setup assistant normally starts automatically. If this does not happen, you can initiate the start with a double click from Windows Explorer on the drive letter of the CD drive.

Choose menu item 1 (NDAS Software Installation). The installation of the NDAS software will now start.

Please close all other applications before you proceed to avoid conflicts during the installation.



Click Next, check the box to confirm that you accept the licence conditions, click again on Next and then on Install. The files will now be transferred.

If a question arises regarding an unsuccessful Widows logo test, you can reply with "continue installation".



It may be necessary to restart the computer after the installation is completed.

Register NDAS device

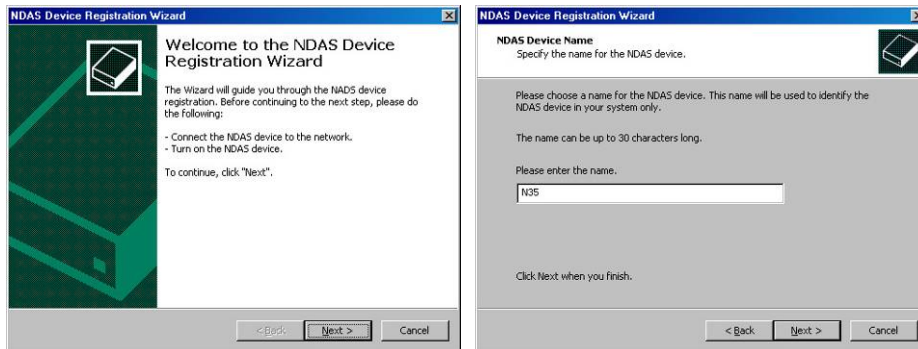
After restarting you will see a new symbol in the task bar at the bottom right:



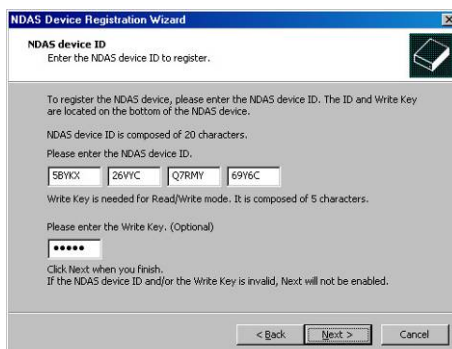
Please make sure that the Rapsody N36 is switched on and that it is connected with the network. Clicking on the NDAS symbol opens the menu:



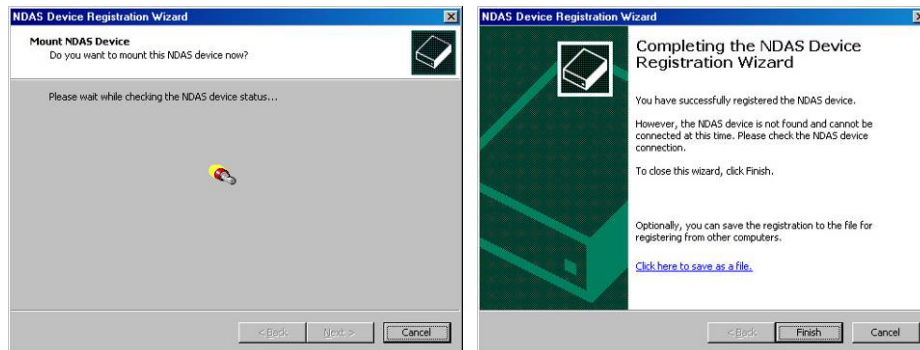
Click on "Register a New Device". After clicking on "Next" you will be requested to supply a name for the device to be registered e.g. N36. Confirm with "Next".



You will now be requested to enter the NDAS key for your N36. You will find this on a sticker on the CD case or underneath the device. Enter it together with the Write Key. The "Next" button to confirm the entry will only be activated if the correct key has been entered.



After confirming with "Next", the program will search for the N36 and a message will appear informing you that the device has been registered correctly. Complete the installation with "Finish".



The only thing that remains in order that you can access the internal hard disk is to open the NDAS menu, in the lower right, once again (depending on the NDAS version this may already happen during the setup procedure described above; important: mount as Read/Write!). You will now see your N36 at the very top. The colour of the symbol indicates the connection status. Blue means that everything is OK. Click on the entry "N36" and then on Mount (RW). After a few moments a further drive letter will appear and you will be able to access the N36 hard disk.

If the symbol is black this indicates that there is no connection to the N36. Either the network connection is interrupted or the Rapsody is not switched on.

If the symbol is red, this indicates that communication is possible but the Rapsody can not access the internal hard disk. The hard disk is either faulty or incorrectly jumpered (must be master).

Partitioning and formatting the hard disk:

If you have bought your Rapsody complete with a hard disk, the disk will normally be partitioned and formatted already and should appear straight away as a drive. In this case, the following steps are unnecessary.

If the hard disk has not yet been partitioned/formatted, please refer to the Windows help in the start menu under item "Help and support" and search for the topic "Creating a partition or deleting a logical drive" (Windows XP) or, respectively, "Creating and formatting a hard disk partition" (Windows Vista). Now create a primary partition (Windows XP) or a "simple volume" (Windows Vista). Always use the pre-set standard settings and choose the file system NTFS. Quick format is usually sufficient. **ATTENTION:** Make sure that you partition/format the right hard disk; all data held there will be deleted!

Note: Dynamic data mediums and compression are NOT supported!

If the drive does not appear automatically although the hard disk is already formatted, you can also assign a drive letter in the data medium administration.

For operating systems other than Windows XP or Vista, please consult the respective documentation provided with your operating system.

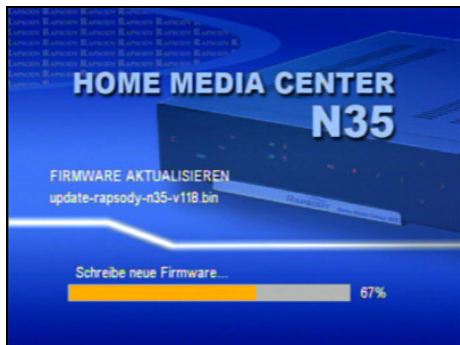
3.5. Carry out a firmware update

Download the latest firmware update from the Rapsody homepage (<http://www.rapsody.ch>). Unpack the ZIP file with a suitable unpacker. If you do not have a pack program please contact Rapsody support to obtain an unpacked version of the firmware file.



Transfer the firmware file (file extension: BIN) to the N36 internal hard disk or to a USB device, e.g. a USB stick.

Start the device in play mode and run the BIN file in the same way as a multi media file. In other words, select the file and start with the OK key.



The update procedure will start. Confirm any questions that may arise with OK. The player will restart after completing the update.

Be sure to always run an initialisation in Setup!



Warning:

Make sure that the power supply is not switched off accidentally during the update. A faulty update may result in your Rapsody no longer being able to start!

In the event that a firmware update fails, try the following **Firmware Recovery** procedure. If this does not work please contact the Rapsody support.

1. Copy current N36 Firmware (.bin) on your PC to the main directory (no subfolder) on a USB storage device.
2. Connect the USB storage device to the N36 rear USB host socket while the device is switched off.
3. Hold the BOOKMARK key on the remote control pressed (lower left) and switch on the N36 at the touch panel.
4. All LEDs should now be illuminated (you can release the Bookmark key now) and an LED should blink after a few moments.
5. The update should be completed after approx. 10 minutes and the player will automatically shut down. Switch on again and select the video output via the TV OUT key.

4. Operating the device

4.1. Navigation/Main menu

After switching on, the N36 takes about 10 seconds to initialise the hard disk and the operating system. No picture appears on the output device during this time.

When the initialisation is completed the main menu is displayed. With the arrow left/right keys, you can select a menu item and enter it with the OK key. You can also reach each of the main menu's sub items directly with a key on the remote control.



NDAS Disk / HDD

You can play back multi media files from the internal hard disk here. After selecting the menu item you will first see a list with available NDAS devices. This will normally be the internal hard disk. After selecting, the list with the partitions on the internal hard disk is displayed. Select the partition that you want.

You will now see the folder structure that you created when saving the data on the hard disk; you can navigate in this structure with the arrow keys. The OK key switches to a folder that is selected or, respectively, runs the file if one is selected (see item 4.2).

The Stop/Back key moves up one folder hierarchy or, respectively, stops playback.

By pressing the number keys you can skip directly to files that are located further back. This is useful for folders containing many files. For instance, if you enter 345 you will skip to the 345th file in the folder. At the bottom right you will see the total number of files in this folder.

Only such files will be displayed that have a file extension that can normally be played back.



Sharing a PC

If you select this item you will see a list showing all PCs in the network by name. When you select a PC a list of shared network resources, which you can open, will be displayed.

In this way you can access data saved on network resources.

You navigate in the same way as with the internal hard disk (see HDD).



By right clicking on a folder under Windows 2000/XP, you can release it directly for sharing in the network.

Please consider that other network participants can also access your data if read access rights are granted!

USB Disk

Here you can play back files directly from the devices connected via the USB host socket. You navigate in the same way as with the internal hard disk (see HDD).

Available USB devices will be listed when you select the USB menu item; if you select a device its folder structure will be displayed.



Playlist / INTERNET RADIO

The playlist function has been deactivated and is now intended for the future "Internet Radio" function; this will be available with a free firmware update from rapsody.ch. You will find further information about Playlist files under 4.2.

The Playlist function (for automated playback) has been replaced by the new Autoplay function.

AUTOPLAY

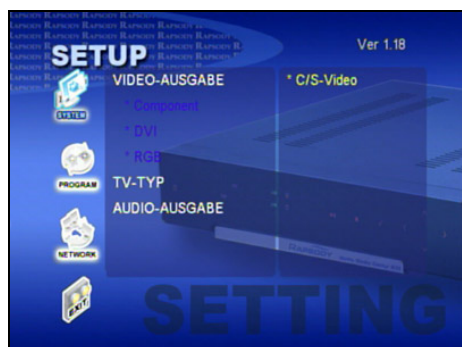
Autoplay allows media in a particular folder (internal HDD, network resource, USB) to be played back automatically when the N36 starts up. The procedure is as follows:

- SETUP -> PROGRAM -> AUTOPLAY -> [On]
- exit SETUP and navigate to the folder that you want to have played automatically.
- select the folder and press the [GOTO] button on the remote control
- Make sure that the check is set (X = cancel) and press OK
- The contents of the folder will be automatically played back the next time the N36 starts up



Settings/Setup

With this menu item you enter the setup menu. You will find exact information about setting up your N36 under 3.2 – Setup.



4.2. Play back multi media files

Video files

Select a video file and run it by pressing the OK or Play key.

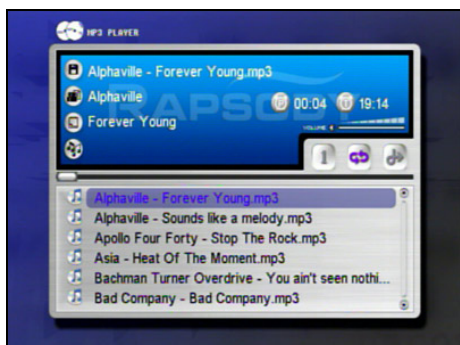
The playback should start after a short time. During playback you can use the remote control to e.g. change the volume, pause the film or change the proportions of the picture (see section 4.3)



Audio files

Select an audio file and run it by pressing the OK or Play key.

A media player appears on the screen and playback starts. This shows you additional information (if present) held in the files (ID3 Tags) and has a small navigation field in which you can select other audio files during playback and play them directly using the Play key.



Viewing photos

Select a photo file and start it by pressing the OK or Play key.

Photos are displayed with a slideshow function configurable in the setup menu (see 3.2 – Setup). The pictures are displayed consecutively after an interval which you can specify as you wish.



Playlist files

The Rapsody N36 can open M3U or PLS files. Create a file on your PC, for example with Winamp, and save this direct on your Rapsody. This file can contain a mixture of audio, video and image files. After opening a playlist file, you will see the files it contains as in a sub-folder and can play them back as you wish.

Please observe that a playlist file cannot mix files from different sources such as USB discs and the internal hard disk. You can only play back files from the storage medium on which the playlist file is stored.

DVD Contents

You can play back the contents of the DVD that you previously copied on to the hard disk together with the menus and all the features of a DVD. To do this simply copy the DVD files to a directory and run the IFO file from there.

Make sure that you do not infringe upon any copyrights when copying the DVD contents!



After starting the IFO file, you can navigate with the menu in the DVD, display subtitles, change the language or adjust viewing preferences using the remote control. In the same way as you are used to with a DVD player.

4.3. The remote control unit and its functions

Your Rapsody N36 comes with a modern and easy to use remote control unit. The illuminated keys glow for a while making using your remote control in the dark much easier.

Arrow keys/OK key (tick icon)/number keys

The OK key and the surrounding arrow keys are the central operating elements. You can navigate in the N36 with these keys (see 4.1 – HDD).

Play/Pause

This key starts a multi media file playback. While a multi media file is running, this key pauses the playback. Press again and playback will continue.

Stop/Back

This key interrupts playback and returns to the menu or allows you to navigate to a higher folder.

Volume

You can change the playback volume of your Rapsody N36 here.

Skip

With these keys you can skip to the next or the previous menu item during playback.

Search

These keys allow you to fast forward or reverse when playing audio or video files. With video files the speed can be changed by repeatedly pressing the key.

Home

The player returns to the main menu when you press this button.

NDAS

Access the internal hard disk.

PC

Access to network resources

USB

Displays connected USB devices

Playlist

Skips directly to the Playlist folder on the internal hard disk and begins to play the first file.

Power

Switches the Rapsody on/off.

Setup

This key starts the Setup menu as long as a multi media file is not currently being played.

Goto

The Goto key allows you to skip to a particular point in time when playing back a video.



Mute

Interrupts audio playback until you press the key again.

Sync

Allows you to change the point in time that the subtitle is displayed when playing a film.

Sub Title

Switches sub titles on/off/further.

Audio

Allows you to switch tracks with multi media files having more than one audio track. It will take a while until the sound switches over.

Menu

With this key you return to the DVD menu if available, when playing back DVD files.

Title

Opens the title selection menu when you are currently playing a DVD.

Zoom

With this key you can adjust the picture with photo and video playback to suit the display device, e.g. if it is distorted.

Full screen enlarges the contents to fill out the screen, standard view switches to the view mode selected in setup (see 3.2 - video playback)

Angle

With DVD playback, this key lets you select different camera angles (e.g. with some music videos).

Info

Displays information about the files that are run during video playback.

Bookmark

Creates a bookmark or, respectively, opens the list of bookmarks. You will find a detailed description about using the functions further on in this user manual.

Picture

With the picture key you can adjust the picture's brightness, contrast and colour.

TV Out

Switches between video signal outputs, or respectively, the types of video signal. The current output mode is shown on the front panel of the device.

Repeat

This button switches between the different repeat modes. These are:



All files in the folder will be played consecutively over and over again.



All files will be played at random over and over again.



All files will be played consecutively once.



All files will be played at random once.



A single file will be played repeatedly.

4.4. Touch Panel Front

Your Rapsody N36 has an innovative touch panel front. It is glossy black when switched off and comes alive when you switch on.

The on/off symbol is illuminated in standby mode and is touch sensitive. When switched on, the keys on the right hand side of the front are also touch sensitive. A light touch is sufficient to carry out the corresponding action. You can navigate with these keys in same way as with the remote control.



Additional information such as network activity, video mode or the file type currently being played is also shown on the front.

4.5. Bookmarks

During playback of video files, you can set bookmarks at particular positions enabling you to skip there directly later on.

If you are not currently playing back a file, pressing the Bookmark key will provide you with a list of saved bookmarks with which you can continue directly with the film. If you interrupt a film with the stop key, a bookmark will also be created in the list so that you can continue with the film later.

The list remains stored even after switching off the device.

You can continue playback from this position by choosing a title from the bookmark list and pressing play. Entries can be deleted from the list by pressing the stop button.

4.6. Subtitles

Some DVD films also have subtitles; you can select them simply by using the subtitle button.

If you have a subtitle file (SUB or IDX), matching the film, with other video formats such as DivX, you can run it as well with the subtitle key. Please note that the video and the subtitle file must have the same name.

5. Solving problems

5.1. Frequently asked questions

With some video files my Rapsody indicates that playback is not possible. This is indicated although the file is an AVI-file. Why does this happen?

AVI is a so-called container. This container can include all types of video files. Among others, of course, these may also be seldom video formats or formats that do not conform to the usual conventions. For this reason, the Rapsody N36 may be unable (at the present time) to play back some video files even if they have a standard file extension.

This is the case e.g. with some video files from digital camcorders or TV cards.

Help! My Rapsody suddenly shows a Korean menu and I can't find the language setting any more!

Very annoying! Under 3.2 – language selection you will find detailed steps to enable you to set your player's language back to German.

The picture quivers. What is the fault?

This can have different causes. As well as faulty video files this can also be caused by too slow data transmission (with some USB devices) or also a data transfer rate that is too high for the Rapsody's chipset.

For example, unpacked AVI files or extremely high resolution HDTV streams can cause problems. In order to view them with the Rapsody, you should convert such files to file formats that are compatible.

I can't access a device connected to the USB host although I can see it in the USB list.

Not all USB devices keep exactly to the specifications for a USB mass storage device. It is, of course, not possible to install a driver on the Rapsody for a special device. This means that connected devices must keep to the respective standards. Unfortunately this is not always the case. If you are looking for USB-hard disk housings, USB sticks or other devices that work reliably with the N36, please contact our support (<http://www.rapsody.ch>).

5.2. Further information

On our Internet site (<http://www.rapsody.ch>) you will find further information, downloads and assistance in connection with your Rapsody. You will also find our Internet forum there where we can help you quickly and competently with your problems.

5.3. Service/Repair

Should you have any questions that cannot be answered by this user manual, we recommend that you first consult the forum at www.rapsody.ch/forum. Please contact your dealer directly, if you suspect that your device is defective.

Technical details of the Rapsody N36

Supported file formats (without liability)

Video playback:

DivX 3.x/4.x/5.x/6.x, DivX-HD, XviD, AVI (container, compatible Codec necessary), MPEG1/2/4 (no MPEG4-AVC / H.264 possible), DAT, VOB, IFO, ISO, HD-WMV, WMV, M2V, M2P, TP, TRP

Audio playback:

MP3, WMA, WAV, AAC, Ogg Vorbis

Pictures:

JPEG

Video output: Composite with PAL/NTSC resolution, component and DVI with 720p, 1080i and 1080p resolution (DVI also 1600x1200).

Audio output: 2 channel analogue, 5.1 channel optical/coaxial (AC3, DTS)

Interface: RJ45 for access to internal HDD (with NDAS software), 2 x USB 2.0 host for connection to data mediums

Operating system: MS Windows 98SE / ME / 2000 / XP / Vista, Mac OS X, Linux

File system: FAT32, NTFS

Temperature: 0~40 C°

Dimensions: 248mm (W) x 244mm (D) x 47mm (H)

Weight: 1800 Gram (without hard disk)

Power supply: 12v 5A AC/DC adapter with wide area input (AC 100~220v, 50~60Hz)

Imprint

Simpex IT-Solutions AG (Switzerland) & Ceptra Solution GmbH (Germany)

Copyright

The texts, pictures and graphics as well as the layout of this user manual are protected worldwide by copyright. All texts, pictures, graphics and other files included in this user manual are protected by copyright and other laws protecting intellectual property. They may be used within the scope offered but not, however, be copied or modified for trading purposes or with the intent of passing them on to others or be used in other documents. Unauthorised use, copying or distribution of individual contents or entire pages is prohibited.

A licence for the use of intellectual property is not granted with this user manual. All trade marks used in this user manual are subject to the respective valid trade mark laws and the ownership rights of the registered owners. This also applies to any third part trade marks. It should not be assumed that trade marks are not protected by third party rights simply because they are named here.

All rights reserved.

Exclusion of liability

The content of this user manual has been composed with the utmost care. However, we cannot assume responsibility for the correctness and exactness of the information provided. We exclude all liability for damage that may arise directly or indirectly from using this user manual as far as no intentional or grossly negligent fault exists on our part.